

TRIVIA

Who we are!!



45th historical “tidbit.”

Dr. John Dahlem with help from Sharon Hodge and the CIF-SS Office Staff

Updated 2/24/2008

Total number of member schools – 567

Number of Public Schools – 354 (62%)

Number of Private Schools – 213 (38%)

Average school size by enrollment – 1,423

Number of boarding schools – 19

Number of freelance schools (no league affiliation) – 33

Number of leagues – 86

Largest league by enrollment – Moore (average of 3,900)

Total population of students served – 802,526

Number of all boys schools – 19

Number of all girls schools – 24

Largest School by enrollment – 4,700 Long Beach Poly

Smallest School by enrollment – 14 Testimonial Christian

School farthest:

North – Lee Vining (geographically is north of San Francisco)

South – Avalon, Catalina Island

West – Morro Bay

East – Twentynine Palms



If Avalon played Lee Vining they would have to travel 414 miles

When Lee Vining plays Baker Valley in the Hi-Lo League, they must travel 340 miles with a estimated travel time of 6 hours.



Unique locations:

- Avalon – on Catalina Island
- Death Valley Academy – in Shoshone
- Trona – no grass on fields



Trona’s sand field... “The Pit”

- Number of square miles served – 171,200
- Number of counties served – 10
- Number of cities served – 230

City with the most CIF-SS schools:

- Los Angeles (32)
- Riverside (15)

Most popular mascot:

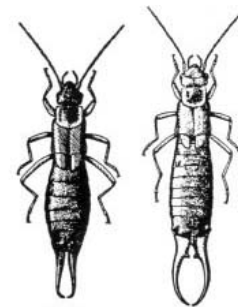
- #1 Eagles (39)
- #2 Lions (17)



“The Spuds”

Unique Mascots:

- Amens - Holy Martyrs
- Breakers - Laguna Beach
- Contenders - Faith Baptist
- Gales - Holy Family
- Kares - Rio Hondo Prep
- Koalas - Connelly
- Nitros - Glendale
- Rajahs - Indio
- Seraphs - St. Bonaventure
- Spuds - Ojai Valley
- Tarbabe - Compton
- Toads - Thacher
- Tologs - Flintridge Sacred Heart



“Earwigs”

The most unique nickname:

- #1 Earwigs (Dunn School)
- #2 Spuds (Ojai Valley)



Match-ups that would be fun to see:

- The Lightning vs. the Flashes
- The Roadrunners vs. the Coyotes
- The Hornets vs. the Yellowjackets
- The Waves vs. the Breakers
- The Saints vs. the Sun Devils or the Red Devils vs. the Diablos
- The Aztecs vs. the Conquistadors
- The Fighting Irish vs. the Fightin Scots or the Highlanders
- The Toads vs. the Fighting Frogs

Most popular colors:

- #1 Blue & Gold (33)
- #2 Black & Gold (26)

Most unique color:

- Rainbow (Oak Grove)
- Salmon & Teal (Jack Weaver)
- Vegas Gold (Oaks Christian)
- Platinum (Chaparral)



Lee Vining High School

Schools with single Color:

- Ramona (Columbia Blue)
- Windward (Royal Blue)

School with four colors:

- Joel John Scholastic (Pink, Green, Black, White)

School with the same names:

- 5 schools start with Bishop
- 4 schools start with Calvary Chapel
- 3 schools start with Lutheran
- 3 schools start with Poly
- 2 schools with same name:

- | | |
|-----------------------|------------------|
| Burroughs | Santiago |
| Cabrillo | St. Joseph |
| Canyon | Valencia |
| Centennial | Valley Christian |
| Cornerstone Christian | Wilson |
| La Quinta | |
| Notre Dame | |
| Pacifica | |

Number of school districts served – 145

District with most member schools:

Anaheim Union High School District (9)

Archdiocese of Los Angeles - (36)

Unique types of schools:

American Indian schools

Court Schools

Prep Schools

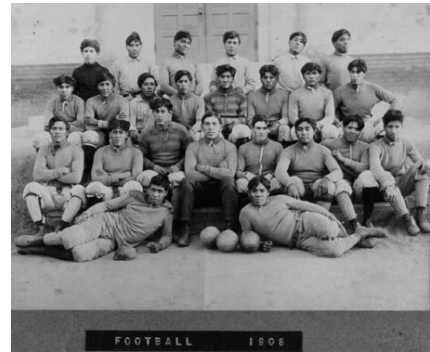
Special education schools

School for the Deaf

Schools with incarcerated kids

Schools for the arts

Special academic academies



Early football team... Sherman Indian Institute

THE STATISTICALLY AVERAGE SCHOOL IN CIF-SS:

Name: Named after a city

Colors: Blue & Gold

In a league with 5 other schools

Public

Location: Los Angeles

Enrollment 1,350

Public

Coed

Mascot: Eagles

Demographics:

40% Caucasian

35% Latino

10% African American

10% Asian

5% Other

32 languages spoken