



2015-2016

Winter Sports Preview

Boys & Girls
Basketball Season





PROUDLY SUPPORTING SOUTHERN CALIFORNIA HIGH SCHOOL ATHLETES



SoCalFordDealers.com



10932 Pine Street
Los Alamitos, CA 90720
(562) 493-9500 * Fax (562) 493-6266

DATE: OCTOBER, 2015
TO: CIF-SS BOYS AND GIRLS BASKETBALL COACHES
FROM: RAINER WULF, ASSISTANT COMMISSIONER
SUBJECT: 2015-2016 BASKETBALL SEASON

* * * **WELCOME TO THE 2015-2016 BASKETBALL SEASON** * * *

The Basketball Preview Packet has been prepared to assist you in the organization of your school basketball program. The information is important in order to prepare for the upcoming season. Please share this information with your assistant coaches.

The following items are included in the packet:

- Calendar Dates
- Playoff Format/League Entries/At-Large Entries/Freelance Qualification
- State Enrollment Divisions
- Blue Book Rules -- and Other Important Information
- Accountability Rule
- Player Conduct Rule/Fighting Definition
- Summer Time Rules
- Other Points of Interest
- Coach's Responsibility -- Sportsmanship/Crowd Control
- Responsibilities of Sportsmanship
- Sportsmanship, the Influence of the Coach
- Rule Changes 2015-2016
- Coaches Box
- Duties of Scorers and Timers
- Sanctioned Events Update

* * * * *

2015-2016 BASKETBALL ADVISORY COMMITTEE

Jamal Adams, Loyola HS
 Leslie Aragon, Orangewood Academy
 Jon Bahnsen, Brethren Christian HS
 Bob Boies
 Greg Coombs, Godinez HS
 Mark Decker, Corona Del Mar HS
 Jerry DeFabiis, Colony HS
 Ann Dena Sjoerdsma, ML King HS
 Todd Dixon, El Toro HS
 Hung Duong, Mark Keppel HS
 Eleanor Dykstra
 Marcelo Enriquez, Redondo Union HS
 Angela Fields, Paraclete HS
 Josh Giles, Centennial/Corona HS
 Gail Hale, Canyon Springs HS

Melissa Hearlihy, Harvard-Westlake HS
 Tom Hegre, Knight HS
 Mike LeDuc, Glendora HS
 Jim Martin, Laguna Hills HS
 John Moore, Officials Liaison
 Frank Obregon, Officials Liaison
 Sally Orlando, Hesperia Christian HS
 Jim Perry, HBUSD
 Ed Prange, Loara HS
 Steve Smith, Windward HS
 Charles Solomon, Brentwood HS
 Steve Tarabilda, Murrieta Valley HS
 Tim Tucker, Maranatha HS
 Ray Walker, Artesia HS
 Richard Wiard

2015-2016 BASKETBALL CALENDAR DATES

Following is a capsule of the CIF Southern Section calendar for the upcoming Boys and Girls Basketball season:

FIRST CONTEST

The initial date on which a school may schedule and conduct an interscholastic contest is MONDAY, NOVEMBER 23, 2015.

LAST CONTEST

All league competition must end on or before FRIDAY, FEBRUARY 12, 2016. Schools may compete until February 13th for non-league contests only.

CIF SOUTHERN SECTION FORD BASKETBALL CHAMPIONSHIP DATES -- **ALL PLAYOFF DATES ARE TENTATIVE AT THIS TIME!**

BOYS – DIVISIONS 1AA-6

February 17, 19, 23, 26, and March 2.

Finals: March 4 or 5 – Honda Center,
Azusa Pacific University, or Godinez High School

BOYS – OPEN DIVISION

February 19, 23, 26, March 1 or 2 (consolation
semifinal) March 3 or 4 (consolation final)

Finals: March 4 or 5 – Honda Center,
Azusa Pacific University, or Godinez High School

GIRLS – DIVISIONS 1AA-6

February 18, 20, 24, 27, and March 2.

Finals: March 4 or 5 – Honda Center,
Azusa Pacific University, or Godinez High School

GIRLS – OPEN DIVISION

February 20, 24, 27, March 1 or 2 (consolation
semifinal) March 3 or 4 (consolation final)

Finals: March 4 or 5 – Honda Center,
Azusa Pacific University, or Godinez High School

SPECIAL NOTE: Should both boys and girls teams from the same school advance to the semifinal round, the CIF-SS office will reserve the right to change the schedule.

CIF STATE BASKETBALL CHAMPIONSHIPS --

STATE REGIONALS -- March 9, 11, 12, 15, 19, 2016

STATE FINALS -- March 24 and 26, site Sleep Train Arena, Sacramento.

CIF SOUTHERN SECTION FORD BASKETBALL CHAMPIONSHIPS PLAYOFF FORMAT

As adopted by the CIF Southern Section Council, **LEAGUE ENTRIES WILL BE LIMITED TO THE FOLLOWING:**

- 4 Team Leagues - 2 Entries Guaranteed Only**
- 5 Team Leagues - 3 Entries Guaranteed Only**
- 6 Team Leagues - 3 Entries Guaranteed Only**
- 7 Team Leagues - 4 Entries Guaranteed Only**
- 8 Team Leagues - 4 Entries Guaranteed Only**
- 9 Team Leagues - 5 Entries Guaranteed Only**

Each championship divisional tournament bracket will be maintained at 32 team draws, depending on the number of entries submitted.

In divisions where there are more than 32 automatic qualifiers, "wild card" games will be played to reduce the field to accommodate the bracket of 32 teams.

CIF-SS Basketball Playoff Division Breakdown Criteria -

1. Every year, schools will be placed into 11 original enrollment divisions. These 11 divisions (1AA, 1A, 2AA, 2A, 3AA, 3A, 4AA, 4A, 5AA, 5A, 6) will have approximately 44 to 75 schools. Divisions 5 and 6 may have higher numbers of schools than Divisions 1-4 to give a better chance at filling complete playoff brackets in those divisions.
2. Secondly, each member school will then have a cumulative CIF-SS playoff "three-year point profile" logged for the preceding three seasons (12-13, 13-14, 14-15). These totals are accumulated with points earned by a win in rounds one through the finals of each season.
3. At this stage, schools failing to qualify for the CIF-SS playoffs over a preceding three-year span, thereby accumulating "0" weighted points **AND not qualifying for the playoffs during that 3 year period**, will be moved down one-half division **from their original enrollment grouping**, in an effort to address competitive equity.
4. Next, those "power schools" that have collected significant point totals over 3 years will be moved up accordingly **from their original enrollment grouping** based upon the following:
 - 0-20 points** – No movement, will remain in original enrollment grouping
 - 20-23 points** - will be moved up ½ division (example: 2AA to 1A),
 - 24-25 points** - 1 full division (example 4A to 3A)
 - 26 points and up** – move up to Division 1AA

This will serve to address strength in the sport and dominance in a particular division over the course of three seasons.

5. CIF-SS Playoff brackets will be filled to 32 teams unless the number of automatic and at-large teams in a particular division necessitates a smaller bracket.
6. If there are more than 32 "automatic" qualifiers in a particular division, "Wild Card" games will be used to reduce the field to 32 teams.

7. This overall leveling by strength and non-strength (not qualifying for playoffs) will still maintain a grouping of approximately 44-75 schools in any one division (Divisions 5 and 6 may be at the higher end), with each “new division” more balanced in terms of competitive equity.
8. At-large teams will be selected only to fill to 32 team brackets in each division using selection criteria discussed in the basketball preview and bulletin and as selected by the CIF-SS Coaches Advisory Committee.

Playoff Division Review: Any school with an enrollment at 600 or below, that is placed in Division 1AA, based upon their previous 3-year Power Point Profile (26 or more Power Points accumulated), is granted an opportunity for a review of their placement in that division. Our primary goal is to place schools into playoff divisions in which they have competitive equity with the other schools in that division. **The question to be considered by the sub-committee is whether the school would be competitive against the other Division 1AA schools?** If the committee’s review of the supplied information indicates that a school would not be competitive in Division 1AA, then the school will be moved up one full division from their original enrollment grouping (IE. 6 to 5AA, 5A to 4A or 5AA to 4AA, etc.). The review and final placement of the school for the 2015-16 basketball season will be based upon the following factors, which will be considered and reviewed by a sub-committee of the CIF-SS Basketball Coaches Advisory Committee. **The decision of the sub-committee will be final.**

The subcommittee will consider the following:

- A. Strength of opponents where Power Points were earned in the previous 3 years
- B. Strength of opponents on school’s current schedule and previous 3 year’s schedules.
- C. Number of returning players on the 2015-16 basketball roster of the school.
- D. Current 2015-16 basketball roster, considering transfers and new players to the school this year.

Playoff Division Review Process:

1. Once tentative divisions are released by the CIF-SS Office, schools with 600 or lower enrollment and are placed into Division 1AA will have until **Wednesday, November 11, 2015** to request a review of their original division placement by the sub-committee.
2. Schools requesting a review should submit the following documents via email to the CIF-SS Office by **Wednesday, November 11, 2015:**
 - a. **Statement of Review-** detail in your statement why you feel that your school would **not** be competitive against the other schools in Division 1AA. Please site data from the requested documents below to support your request for review.
 - b. **Schedules and Results-** from the 2012-13, 2013-14 and 2014-15 seasons.
 - c. **2014-15 Schedule** - complete schedule for the upcoming season.
 - d. **Team Roster** - for the 2015-16 season indicating new and returning players and also years of varsity level experience at your school or at any other school.
 - e. **List of New Players** – provide a list any new basketball players to the school this school year, including Valid Residence Changes, Hardship, SOP transfers that will become eligible on **January 4, 2016** and freshman players who will play at the varsity level.

Submission Information:

Email the documents listed above to Assistant Commissioner Rainer Wulf at rainerw@cifss.org

CIF-SS BASKETBALL OPEN DIVISION

Selection of Open Division Teams:

Up to 16 teams will be chosen at the end of the regular season for the CIF-SS Open Division.

Criteria for Selection of CIF-SS Open Division teams and Seeding

A Blue Ribbon committee will be formed by the CIF-SS to select the Open Division teams. Committee will be made up of current and former representatives of the CIF-SS Executive Committee, CIF-SS Basketball Coaches Advisory Committee, SCIBCA Executive Board, CIF State Basketball Coaches Advisory Committee and Media members.

1. Teams will be selected and seeded by the committee using the following criteria: (unweighted)
 - Strength of schedule
 - Overall Record
 - Freeman/Max Preps/CIF-SS Top 16 rankings
 - Strength at end of season (including roster additions/eligibility changes/winning & losing streaks/etc.)
 - Head to Head vs. Open Division Entries
 - Overall Record vs. Open Division Entries
 - Victory vs. Quality opponents
 - Quality loss
 - Unexpected loss

Power Points for Future CIF-SS Playoffs:

1. All first round participants = 12 power points
2. +2 points per win on championship side of bracket
3. +1 point per win on consolation side of bracket
4. Championship maximum = 20 points
5. Consolation maximum = 15 points

Open Division Home Playoff Site Selection:

1. In the first round of the Open Division, the higher seeded team will have the home game.
 - a. Byes in the first round will receive automatic home games in the second round (quarter finals).
2. After the first round, teams will use the same criteria for home team selection as the CIF-SS playoff bulletin dictates.
3. For quarterfinal and semifinal games
 - a. Team with the least number of home games
 - b. Coin flip if equal number of games

Open Division Gym Size Minimum Requirement:

Open Division games generate tremendous interest and require adequate facilities to accommodate the expected crowds for these Open Division games. A first round site may be changed by the CIF-SS Office, if the home gym would not accommodate the expected ticket sales, attendance and community interest. After the first round games on the championship side of the Open Division Bracket, it is mandated that the host school secure a gymnasium that has a posted basketball seating capacity of no less than **2000** spectators for boys and **1,000** for girls. Venues with less than these capacities must be approved by the CIF-SS Office. It is recommended that Open Division schools plan ahead to secure a site that meets this requirement.

California State Playoff Placement:

1. All teams in the CIF-SS Open Division will be guaranteed an automatic bid into the CIF-State Regional Playoffs.
2. All Open Division teams are guaranteed a second round game (champions and consolation brackets). Teams playing 3 or less games will be allowed one scrimmage based on the following guidelines:

Permissible Scrimmage:

Playoff Record

0-2 : 1 scrimmage with an Open Division team between 2/29 and 3/4

1-2 : 1 scrimmage with an Open Division team between 2/29 and 3/4

2-1 : 1 scrimmage with an Open Division team between 2/29 and 3/4

1608.1 SCRIMMAGES: An interscholastic scrimmage in basketball is a training session between a minimum of two and a maximum of three schools where no score is kept, free substitution and time-outs are permitted, spectators are not urged to attend, and officials are not paid.

QUESTION: What is defined as an interscholastic scrimmage?

ANSWER: An interscholastic scrimmage is defined as a training session in which students from more than one school participate, any aspect of play is exercised and no score is kept. Only students regularly enrolled in public and private member schools, grades 9-12, shall be permitted to participate in a scrimmage. Alumni shall not be permitted to take part other than in the one allowable contest where noted in specific sports. It should also be noted that only students enrolled in grades 9-12 at each specific school may take part in regular practice sessions.

3. All CIF Southern Section Champions will be guaranteed a CIF-State Playoff berth.
4. Additional teams need for CIF-State playoff berths will selected using the same At-Large criteria that is currently in place.

At-Large Entries - PETITIONS DUE IN OFFICE BY 11:00 P.M. ON FRIDAY, FEBRUARY 12, 2016.

IMPORTANT: In divisions where there are openings in the 32-team bracket, "At-Large" entries will be accepted to fill the bracket openings. Schools wishing to be considered for an "At-Large" berth **MUST** submit the official "At-Large" petition form which includes their entire completed schedule. The "At-Large Petition-Basketball Only" is found at www.cifss.org under "Forms". **There is no minimum criteria required to apply for an "At-Large" berth.**

At-Large Selection Criteria: (to be used by Tournament Seeding Committee)

The Tournament Selection Committee will utilize the following information in its selection process for "At-Large" berths, with each having no specific weight and/or order of preference:

- a) Head-to-head competition of teams under consideration
- b) Overall strength of the league in which the team participates
- c) Overall won/loss record
- d) League finish
- e) Strength against common opponents
- f) Strength of schedule
- g) Strength at end of season (whether team has lost its last 3 games or won its last 3 games, etc)
- h) Freelance teams will be part of the pool for the filling of "At Large" berths
- j) Computer rankings (Cal-Hi, CalPreps and/or MaxPreps)

Each league will also be charged with the responsibility - as in all other sports - of designating a priority order for its member-school entries for pairing purposes. CIF-SS tournament management will place schools in the 32 team brackets based on league entry order and will follow established and accepted guidelines in pairing the tournament brackets.

PLAYOFF GAME BALL

The Spalding TF-1000 NFHS Classic or Legacy (Boys') and TF-1000 NFHS 28.5 Classic or Legacy 28.5 (Women's) balls will be used in **ALL ROUNDS** of the 2015-2016 CIF Southern Section Ford Playoffs. The Spalding TF-1000 NFHS (Boys') and TF-1000 NFHS 28.5 (Women's) balls will be used in the CHAMPIONSHIP FINALS of the 2015-2016 CIF Southern Section Ford Playoffs.

FREELANCE QUALIFICATION

Freelance schools interested in participating in the basketball playoffs should submit a schedule (CIF Blue Book Rule 3210, pages 244-245) to the CIF-SS Office by Monday, November 23, 2015 to the attention of Rainer Wulf, Assistant Commissioner. **Additionally**, it is necessary to submit your schedule to www.cifsshome.org, when it is requested, for inclusion in the Master Basketball Schedule.

Game results must be called into the CIF-SS Office on a regular basis.



STAY CONNECTED WITH MAXPREPS ON YOUR MOBILE PHONE

- REPORT SCORES • ROSTERS • SCHEDULES
- STATISTICS • LEAGUE STANDINGS
- TEAM & SCHOOL WALL



MaxPreps is the Official Source of Scores and Stats for the CIF Southern Section.

MAXPREPS

Athletic Directors and Coaches,
To obtain your team's access code please email
coachsupport@maxpreps.com or call 800.329.7324x1



SOUTHERN SECTION CRITERIA FOR ENTRY INTO CIF STATE BASKETBALL CHAMPIONSHIPS

Each Section will determine the divisional placement for its schools who qualify for the state basketball championships and is required to submit the placement of schools into the five divisions to the State CIF Office by a pre-determined date. CIF member schools will be required to participate in the division that has been established by their respective Section. The exception is the "Open" division which will be determined by established criteria. There are no enrollment parameters for the "Open" division. Schools of **ALL** enrollment sizes, who fulfill established criteria may be placed in the "Open" division.

CIF Southern Section schools will be placed in divisions for consideration in the California State basketball Championships based on the *Projected State Division Placement* chart.

Projected State Division Placement for Basketball

<u>Open (4 bids)</u>		<u>Division 3 (8 bids)</u>	
Open	(semi)	2AA	(finalist)
Open	(semi)	2AA	(finalist)
Open	(semi)	2A	(finalist)
Open	(semi)	2A	(finalist)
<u>Division 1 (8 bids)</u>		3AA	(finalist)
Open	(quarter)	3AA	(finalist)
Open	(quarter)	At - large	(semifinalist from 2AA, 2A, or 3AA)
Open	(quarter)	At - large	(semifinalist from 2AA, 2A, or 3AA)
Open	(quarter)	<u>Division 4 (8 bids)</u>	
Open	(consolation)	3A	(finalist)
Open	(consolation)	3A	(finalist)
Open	(consolation)	4AA	(finalist)
Open	(consolation)	4AA	(finalist)
<u>Division 2 (8 bids)</u>		4A	(finalist)
Open	(consolation)	4A	(finalist)
Open	(consolation)	At - large	(semifinalist from 3A, 4AA, or 4A)
Open	(consolation)	At - large	(semifinalist from 3A, 4AA, or 4A)
Open	(consolation)	*Schools in Divisions 5AA, 5A, or 6 with enrollment over 600 will only be considered for entry into Division 4 for State Regional per Division 5 enrollment cap	
1AA	(finalist)		
1AA	(finalist)		
1A	(finalist)		
1A	(finalist)		
		<u>Division 5 (8 bids)</u>	<i>(under 600 enrollment)</i>
		5AA	(finalist)
		5AA	(finalist)
		5A	(finalist)
		5A	(finalist)
		6	(finalist)
		6	(finalist)
		At-Large	(semi)
		At-Large	(semi)

CIF State Open Division – The Southern Section will select four (4) teams (no enrollment parameters) to compete in the CIF State Open Division. A 5th entry may be entered by the Southern Section if the 8 team field cannot be filled by a qualified entry from the Los Angeles, Central or San Diego sections. Each regional “open” division tournament will have a maximum of eight teams. The tournament committee will select the teams for the “open” division before they seed the five divisions of the State Tournament. **There is no “opt out” provision for schools selected for the “Open” division who fulfill established criteria.**

The following criteria will be utilized to select the teams for the Open Division for the CIF State Basketball Tournament. A school needs to only satisfy one of the criteria below to be considered:

- A school must have won two consecutive section basketball championships; or a school must have qualified for the regional championships for three of the past four years.
- A school qualifies for the second straight year after competing in the state or regional final the previous year.
- A school qualifying for their regional playoffs may request to be placed in the open division.
- A school was ranked in the Top Ten of Cal Hi Basketball, Cal Preps and/or MaxPreps Rankings (early March) the past two years (current year and previous year).
- A school competes in its section Open Division semifinal.

Evaluation Tool:

- A school’s strength of schedule will be used to evaluate the strength of the program. (i.e., regional or national type of schedule).

Entry Cap:

- No more than four teams may be selected from any one of the ten sections
- A 5th entry may be entered by the Southern Section if the 8 team field cannot be filled by a qualified entry from the Los Angeles, Central or San Diego sections.
- Sections may choose to replace selected teams in the division from which they were selected.

For Divisions 5 of the California State Championships, CIF Southern Section schools will be placed in an enrollment category set by the State. The State enrollment limit is for Division 5 (not to exceed 600). The exception would be when a CIF-SS Division 5 school has an enrollment that exceeds the enrollment category for that State division (600). In that case, the school would be considered for placement into the next appropriate higher division. For example, a CIF-SS school that is in Division 5 for the Southern Section playoffs, based upon our criteria but has an enrollment of 700 would be considered for placement in Division 4 for the California State Basketball Championships.

Open Division	As determined by criteria – (no enrollment parameters)
Division I	As determined by Section
Division II	As determined by Section
Division III	As determined by Section
Division IV	As determined by Section
Division V	As determined by Section, but enrollment may not exceed 600

All berths available to the Southern Section will be filled based on the following criteria with each area having no specific weight and/or order of preference. In each division, teams selected will be considered in the following order: divisional champion, first-round winners in CIF-SS Open Division and CIF State bid consolation bracket winner, CIF-SS Open Division entrant, divisional runner-up, semi-finalists and quarter-finalists.

*****CRITERIA*****

. each area having no specific weight and/or order of preference. . . .

- (a) Head to head competition of teams under consideration
- (b) Strength against common Southern Section opponents
- (c) Southern Section Divisional Placement i.e., Division I recognized as most difficult
- (d) Success in Southern Section tournaments
- (e) Strength against statewide opponents
- (f) Strength of schedule
- (g) Overall win/loss record
- (h) Strength at end of season
- (i) State-wide and/or Southern Section rankings
- (j) Computer rankings (Cal-Hi, CalPreps and/or Max Preps)

The selection committee will convene at the conclusion of the Southern Section Basketball Championships. It will be comprised of the CIF-SS Assistant Commissioner for basketball, members of the CIF-SS Basketball Coaches Advisory Committee*, and representative of SCIBCA.

*Please note: In order to serve as a member of the Selection Committee and individual's school may not be under consideration for their division.

SPECIAL NOTE: All four grade levels (9-12) are calculated to determine the enrollment classification for the 2015-2016 school year. State playoff division placement for Division 5 is based on the 2014-2015 CBED reports. Adjustments will be made for those schools showing a 15% increase or decrease on the 2014-2015 CBED report.

Please look for Southern Section and State classification data and the Southern Section and State divisional playoff information during the month of November.

Boys/Girls Individual School "Power Point" Profile

By recommendation of the CIF-SS Basketball Coaches Advisory Committee and the Executive Board of the Southern California Interscholastic Basketball Coaches Association (SCIBCA), we have moved to a 3-year "Power Point" profile. This 3-year Power Point profile along with the 2014 CBED enrollment numbers (**2015 CBED's if gain or loss of 15% enrollment or more**) are used to determine final division placement of schools for post season basketball championships. We have posted a listing of the individual school Power Point profiles on the CIF-SS website under the "**Basketball**" tab found under "**Sports**" at www.cifss.org. Along with this alphabetic listing of schools and profiles, is a description of the criteria and process that was adopted and will be used to develop final basketball playoff divisions for 2015-16. Please review these pages with your basketball coaches to find your school's profile and familiarize yourself with the process.

The finalized basketball playoff divisions will be posted in late October/early November, once the enrollment adjustments have been received by the CIF-SS office to account for the 15% shifts in 2015 CBED enrollment.

Questions and Answers

Question: Will schools still automatically qualify for the playoffs by finishing in the top half of their league, as is the current practice?

Answer: Yes. There is no change in this qualifying procedure

Question: By using this format, will the playoff divisions in basketball be adjusted each year?

Answer: Yes. They will be adjusted each year based on the school's new CBEDS number and three year profile point totals.

Question: How are points accumulated in a given year?

Answer: **In CIF-SS Divisions 1-6:** One point for a win in the first round; two points for a second-round win; three points for a quarter finals' win; four points for a semifinals' win; and five points for a CIF-SS championship. The maximum points a school can earn in any one playoff season is 15 points. In the event of a wild-card win (based on more than 32 teams automatically qualifying), there are no points earned.

In CIF-SS Open Division: 12 points for qualifying for Open Division, then two points for every win on the championship side of the bracket and one point for every win on the consolation side of the bracket. Championship maximum is 20 points, consolation championship maximum is 15 points.

Question: What is the three-year profile point range for moving up from my original enrollment grouping?

Answer: * **0-20 points** – No movement, will remain in original enrollment grouping

***21-23 points** - will be moved up ½ division (example: 2AA to 1A),

***24-25 points** - 1 full division (example 4A to 3A)

***26 points and up** – move up to Division 1AA

****These three-year point totals will be modified after the 2015-16 season to account for the additional points being allotted for "Open Division" qualifiers beginning this season.***

Question: Can I have my divisional placement reviewed?

Answer: You may **only** request review of your school's divisional placement up to Division 1AA and **only** if your school's CBED enrollment number is at 600 students or below. Divisional placement reviews will be heard by a sub-committee of the CIF-SS Basketball Coaches Advisory Committee and if granted, will place the school one division higher than their original enrollment grouping, instead of the full move up to Division 1AA.

Question: What happens to a school's point total after each year?

Answer: All schools would subtract points earned in the playoffs 3 years ago and add any points earned in the most recent playoffs.

Question: What happens if our school's enrollment grows or declines significantly from one year to another?

Answer: Before final playoff divisions are released, current school year CBED enrollment numbers will be reviewed to determine if a school has lost 15% enrollment or gained 15% enrollment from the previous year. If it has been determined that this is the case, than the current year's CBED numbers will be used for those schools in determining their division placement.

Question: How will teams fill into the state playoffs from Southern Section divisions?

Answer: Because the adjusted criteria is now aligned with the enrollment standards established by the state for Divisions 5, for schools under 600 enrollment, this is how the 8 Southern Section bids in each division and at least 4 in the State Open Division will move into the state playoffs:

Projected State Division Placement for Basketball

<u>Open (4 bids)</u>		<u>Division 3 (8 bids)</u>	
Open	(semi)	2AA	(finalist)
Open	(semi)	2AA	(finalist)
Open	(semi)	2A	(finalist)
Open	(semi)	2A	(finalist)
<u>Division 1 (8 bids)</u>		3AA	(finalist)
Open	(quarter)	3AA	(finalist)
Open	(quarter)	At - large	(semifinalist from 2AA, 2A, or 3AA)
Open	(quarter)	At - large	(semifinalist from 2AA, 2A, or 3AA)
Open	(quarter)	<u>Division 4 (8 bids)</u>	
Open	(consolation)	3A	(finalist)
Open	(consolation)	3A	(finalist)
Open	(consolation)	4AA	(finalist)
Open	(consolation)	4AA	(finalist)
<u>Division 2 (8 bids)</u>		4A	(finalist)
Open	(consolation)	4A	(finalist)
Open	(consolation)	At - large	(semifinalist from 3A, 4AA, or 4A)
Open	(consolation)	At - large	(semifinalist from 3A, 4AA, or 4A)
Open	(consolation)	*Schools in Divisions 5AA, 5A, or 6 with enrollment over 600 will only be considered for entry into Division 4 for State Regional per Division 5 enrollment cap	
1AA	(finalist)		
1AA	(finalist)		
1A	(finalist)		
1A	(finalist)		
		<u>Division 5 (8 bids)</u>	<i>(under 600 enrollment)</i>
		5AA	(finalist)
		5AA	(finalist)
		5A	(finalist)
		5A	(finalist)
		6	(finalist)
		6	(finalist)
		At-Large	(semi)
		At-Large	(semi)

Question: If a 5th Southern Section entry is selected into the State Open Division Regional due to there not being a qualified “at large” entry from the Los Angeles, Central and San Diego sections, how will the added entry be filled in the Division 1 State Regional?

Answer: One “at-large” spot will become available for a Division 1AA or 1A semifinalist to be selected based upon established criteria.



SPALDING

TRUE TO THE GAME®

Official Ball of CIFSS



TF-VB5



TF-1000 CLASSIC



TF-SC5



CFP 12



JV5 ADVANCE

Available at:

- Ken's Sporting Goods
- Calpro Sports
- Sport Chalet Team
- Riddell Sports
- Jernigan's Sporting Goods
- Monkey Sports
- Buddy's All Stars
- Dick's Sporting Goods
- Realvolleyball.com

BLUE BOOK RULES - SPECIAL POINTS OF INTEREST

A) ACCOUNTABILITY RULE --

125.1 - COACH EJECTION -- Upon the ejection of a coach from any CIF-SS contest, it is the responsibility of the principal of said school to file a letter of explanation with the CIF Southern Section Office which includes the circumstances surrounding the matter and what action the principal has taken to prevent a recurrence. Said correspondence is to be filed within **THREE** school days of notification of the ejection. Additionally, upon ejection the coach shall be disqualified from participating in the remainder of the game and will be ineligible for the team's next contest. A second ejection will constitute a two contest suspension and a third ejection will cause suspension for the remainder of the season.

QUESTION: What happens if unknowingly a coach or player who was ejected the previous game participates in the next contest?

ANSWER: Being in attendance at or coaching/playing in a contest after having been ejected from a previous contest will result in the forfeiture of the contest.

QUESTION: What is meant by attendance at a contest?

ANSWER: Attendance is defined as being present at the team bench/area, inside or in the proximity of a gymnasium, stadium or playing area. The intent of this rule is that the ejected person is not in attendance at the contest.

QUESTION: How does the Accountability Rule affect a coach who coaches more than one level of a particular sport?

ANSWER: A coach who has been ejected from a contest may not be in attendance at ANY contest prior to serving his/her mandatory suspension. (i.e.: An ejected JV coach who is also a varsity assistant may NOT be in attendance at any contest until his/her mandatory JV suspension has been completed.)

125.2 - FAILURE TO COMPLETE A CONTEST -- When a school fails to complete a contest, due to a coach pulling his/her team from the floor, court or field, it is **MANDATORY** that the CIF-SS Office be notified by the Principal within 24 hours (excluding holidays and weekends). The competing schools and officials will be required to file written reports, and after review of the aforementioned material, the principal of the school involved will be required to respond to the CIF Southern Section Office concerning his/her investigation of the incident.

QUESTION: How serious is such action?

ANSWER: It has been the position of the CIF-SS Executive Committee to expect the building principal of the school concerned to relieve the coach from his/her assignment for the balance of that season or the Executive Committee is empowered to consider recommendations for additional penalties.

B) RULE 1601.1 – PLAYING RULES - All basketball games in the CIF Southern Section will be played under National Federation basketball rules unless otherwise provided herein.

C) RULE 1623 - PLAYER CONDUCT RULE - Any player who is ejected for any reason shall be disqualified from participating in the remainder of the game and will be ineligible for the team's next contest. A second ejection will constitute a two contest suspension and a third ejection will cause suspension for the remainder of the season.

Any player whose conduct merits ejection from a game by an official for fighting or assaultive behavior shall be disqualified from participating in the remainder of the game and will be ineligible for the team's next contest. After the suspension from play, the student may only return after certification by the school principal that the student(s) has completed a conference with a school administrator. The appropriate form indicating the completion of the conference must be filed with the Section office prior to rejoining the team.

A second ejection from a game or contest for fighting or assaultive behavior will cause suspension for the remainder of the season. A player who was ejected from the previous contest, who knowingly, or unknowingly, participates in or is in attendance at the next contest, will result in the forfeiture of that contest.

Any player who leaves the confines of the bench or team area during a fight that has broken out or may break out will be ineligible for the team's next contest. After the suspension from play, the student may return only after certification by the school principal that the student(s) has completed a conference with a school administrator. The appropriate form indicating the completion of the conference must be filed with the Section office prior to rejoining the team.

In the case of any suspension from play, the next contest may not be a forfeited, postponed or canceled game.

QUESTION: What must be submitted to the Section office before a student can be cleared to rejoin his/her team?

ANSWER: The Section office will provide a form that may be faxed or mailed to the Section office. The referee or official's report need not accompany the statement, but it is recommended the form be attached to the certification of the conference.

QUESTION: What is meant by attendance at a contest?

ANSWER: Attendance is defined as being present at the team bench/area, inside or in the proximity of a gymnasium, stadium or playing area. Students ejected from a game in progress should remain under supervision of school staff. The intent of this rule is that the ejected person is not in attendance at the contest.

SPECIAL NOTE: This rule does not apply to a player disqualified during a contest for five (5) personal fouls. It would apply to any player disqualified for a second technical foul.

D) RULE 1614 - SUMMERTIME RULES/SUMMER DEAD PERIOD --

(1) 1614.1 - With the exception of the summer dead period, until the beginning of the first official starting date for fall sports, there shall be no restriction on high school coaches working with high school students registered and/or attending their respective high school or entering them in summer competition, provided approval is received from the school principal.

QUESTION: Who may participate in high school summer athletic programs approved by the principal.

ANSWER: Only students registered for the upcoming school year in grades 9 through 12. Additionally, it would be a violation to allow elementary students (8th grade and below) to participate with the high school team. For students enrolled in more than one school, all summer competition must be confined to one school.

(2) 1614.2 - High schools may sponsor sport camps and/or allow non-school sponsored sport camps to use their facilities.

- High school students and individuals from the general community can attend.
- The high school name, nickname and identifying marks can be used in the title and/or promotion of the camp.
- The principal of the high school must give permission for the camp to take place; non-school sponsored camps must secure a facility permit for use of any facilities and equipment.
- The camp must comply with all CIF rules, including those pertaining to undue influence and dead period.
- Non-school sponsored camps should provide required liability insurance for the use of any school facilities.

(3) 1614.3 - A summer dead period must be declared by the school principal for all sports. The dates of the dead period must be forwarded to the Southern Section Commissioner. The dead period must be the same for all levels and must be three (3) consecutive weeks between the end of school or the first Friday in June, whichever is first, and the last Monday in August. No class could be offered which could circumvent the rule. There are no exceptions to the summer dead period.

During the dead period, weight lifting **ONLY** would be permitted. No running or other type of conditioning would be allowed.

Special nationally recognized programs in various sports that require a national or regional championship format, such as Bobby Sox Softball, American Legion or Mickey Mantle Baseball, etc., would be allowed to continue, until completion, during the dead period.

GATORADE® HIGH SCHOOL PERFORMANCE PACKAGE ORDER FORM



G Series Performance Package: \$225

(Up to \$1,115 retail value)

OUR PREMIUM PERFORMANCE PACKAGE

- (6) Cases of Gatorade Prime® Energy Chews (96 servings)
- (2) Cases of Gatorade® Thirst Quencher Powder (yields 168 gallons total)
- (8) Cases of Gatorade Recover® Protein Shakes
OR Gatorade Recover® Whey Protein Bars (96 servings)

Choose 3 of the below Premiums

- 7-gallon cooler
- 10-gallon cooler
- 60-quart ice chest on wheels
- 10 Gatorade® towels
- 24 Gatorade® squeeze bottles
- 4 Gatorade® squeeze bottle carriers
- 1 case of 7 oz. cups (2,000/case)



Create Your Own G Series: \$145

(Up to \$840 retail value)

CHOOSE TWO OF THE BELOW OPTIONS*:

- OPTION #1 – 10 Cases of Gatorade Prime® Energy Chews (160 servings)
- OPTION #2 – 1 Case of Gatorade® Thirst Quencher Powder and 1 Case of 7 oz. cups (yields 84 gallons total)
- OPTION #3 – 10 Cases of Gatorade Recover® Protein Shakes (120 servings)
- OPTION #4 – 10 Cases of Gatorade Recover® Whey Protein Bars (120 servings)

*Create Your Own G Series must consist of 2 different options.



Refuel and Restore: \$70

(\$185 retail value)

IDEAL TO REPLENISH ANY TEAM'S INVENTORY

- (1) Case of Gatorade® Thirst Quencher Powder (yields 84 gallons total)
- (1) Case of 7 oz. cups (2,000/case) OR 24 Gatorade® squeeze bottles

YOUR DEDICATION TO THEIR GAME. OUR SCIENCE. THEIR SUCCESS.



GATORADE CALIFORNIA MARKET REPRESENTATIVES

Southern California

Kari Mills

828-399-0717

Kari.Mills@Pepsico.com

San Diego

Josh Gutierrez

307-631-4393

Joshua.Gutierrez@Pepsico.com

Pasadena / Northridge / Covina /
Whittier / Cerritos / Simi Valley

Rachelle Silberg

619 822 6723

Rachelle.Silberg@PepsiCo.com

Los Angeles / Hollywood / Burbank /
Glendale / Santa Clarita / Inglewood /
Sherman Oaks

Melanie Shell

310 347 1848

Melanie.Shell@Pepsico.com

South Bay / Malibu / Thousand
Oaks / Ventura / Santa Barbara

Steve Shiley

970 222 2298

Steven.Shiley@Pepsico.com

North Orange County / North & West
Inland Empire

THE WORKS BOWL

A BOWL FILLED WITH RICE AND VEGGIES,
TOPPED WITH CHICKEN AND BEEF.

520 calories. 46g of protein.



The
Flame Broiler 
a healthy choice

Quality Food = Quality Life



E) OTHER POINTS OF INTEREST --

- (1) **Rule 1616:** LEVEL OF COMPETITION -- No student shall participate in more than one level of competition in the same sport on the same day.
- (2) **Rule 1617:** MAXIMUM ATHLETIC CONTESTS -- All interscholastic contests are to be arranged in such a way that no student shall take part in more than two athletic contests in any one day.
- (3) **Rule 1619:** COLOR OF JERSEYS -- In all basketball games played between member schools of the CIF-SS, the home team shall wear **white** jerseys, and the visiting team shall wear dark-colored jerseys. If a team has only one set of jerseys, it will be its responsibility to notify the opponent in sufficient time in advance of any scheduled contest, so that proper arrangements can be made to make certain both teams have contrasting colored jerseys.

F) THE COACH'S RESPONSIBILITY FOR TEACHING SPORTSMANSHIP AND MAINTAINING CROWD CONTROL -- When all is said and done, the coach bears the greatest burden of responsibility for sportsmanship. He/She has an unequaled influence upon the activities and behavior of players, the student body, and other spectators. The coach's behavior on the bench certainly influences player and spectator actions and reactions to calls and their overall conduct on the court or in the stands. Therefore, the coach should --

- Set a good example for players and spectators at all times.
- Instruct the players in their sportsmanship responsibilities.
- Discipline student athletes who display poor sportsmanship. If necessary, remove them from a game or the team for stipulated periods of time as appropriate.
- Be a good host to opponents and officials. Treat them as guests.
- Show respect for the officials' judgment and their interpretation of the rules. If you must question a call, do it calmly and quietly. All arguments with officials should be held in private, away from fans and players.
- Shake hands, in public, with the officials and the opposing coach after the contest.

G) RESPONSIBILITIES OF SPORTSMANSHIP

1. THE PLAYER

- a) Treats opponents with respect.
- b) Plays hard, but plays within the rules.
- c) Exercises self-control at all times, setting the example for others to follow.
- d) Respects officials and accepts their decisions without gesture or argument.
- e) Wins without boasting, loses without excuses, and never quits.
- f) Always remembers that it is a privilege to represent the school and community.

2. THE COACH

- a) Treats own players, and opponents with respect.
- b) Inspires in the athletes a love for the game and the desire to compete fairly.
- c) Is the type of person he/she wants the athletes to be.
- d) Disciplines those on the team who display unsportsmanlike behavior.
- e) Respects the officials' judgment and interpretation of the rules.
- f) Knows he/she is a teacher, and understands the athletic arena is a classroom.

3. THE SPECTATOR

- a) Attempts to understand and be informed of the playing rules.
- b) Appreciates a good play no matter who makes it.
- c) Cooperates with and responds enthusiastically to cheerleaders.
- d) Shows compassion for an injured player; applauds positive performances; does not heckle, jeer or distract players; and avoids use of profane and obnoxious language and behavior.
- e) Respects the judgment and strategy of the coach, and does not criticize players or coaches for loss of a game.
- f) Respects property of others and authority of those who administer the competition.
- g) Censures those whose behavior is unbecoming.



PREP FOX SPORTS ZONE

FOXSPORTSWEST.COM

**SHARE YOUR
PHOTOS
WITH US**



#CIFSSPRIDE

@FOXSPORTSWEST

2015-16 NFHS Basketball Rules Changes and Interpretations

1. Rule Changes

10-6-12 - The following acts constitute a foul when committed against a ball handler/dribbler. A player becomes a ball handler when he/she receives the ball. This would include a player in a post position.

- a. Placing two hands on the player
- b. Placing an extended arm bar on the player
- c. Placing and keeping a hand on the player.
- d. Contacting the player more than once with the same hand or alternating hands.

Rationale: The current rule covers the ball handler/dribbler situations but ignores the action that goes on in the post area with the hands, arm bars, etc. The additional language will clarify that the illegal acts should be ruled for every position on the floor.

2. **New Signal:** Established a signal to be used after a basket is made and there is a stoppage in play. The signal is used by the officials to indicate the team inbounding the ball may run the baseline.

3. Editorial Changes:

3-4-2c: By state adoption one commemorative/memorial patch may be worn on the jersey. The patch shall not exceed 4 square inches, shall not be a number and must be located above the neckline or in the side insert.

3-5-3c: All sleeves/tights shall be the same solid color and must be the same color as any headband or wristband worn.

3-5-4a: Headbands and wristbands shall be black, white, beige or the predominant color of the jersey and the same color for each item and all participants. They must be the same color as any sleeve/tights worn.

4. Points of Emphasis:

a. **Post Play:** Note: It is legal for offensive and defensive players to touch when both are maintaining a legally established position. It is a foul and should be ruled as such when:

- (1). An opponent is displaced from a legally established or obtained position.
- (2). An arm-bar is extended and displaces an opponent
- (3): A locked and/or extended elbow displaces and opponent.
- (4) A leg or knee is used in the rear of an opponent to hold or displace
- (5) Holding, hooking, slapping, pinning or pushing the leg or body of an opponent
- (6) An offensive post player "backs-down" and displaces the defender once that defender Has established a legal guarding position.

b. **Rebounding:** One of the leading causes of injury in high school basketball continues to be the result of illegal contact that takes place during rebounding. Some examples of illegal rebounding activity are:

- (1). Displacing, charging or pushing an opponent
- (2). Extending the arms or elbows to impede the movement of an opponent.
- (3) Using the hips or knees to hinder or impede an opponent.
- (4) Violations of the principles of verticality

c. **Free Throw Shooter:** Rule 9-1-3g was revised in 2014-15 to allow a player occupying a marked lane space to enter the lane on the release of the ball by the free thrower. As a result, protection of the free thrower needs to be emphasized. On release of the ball by the free thrower, the defender boxing out shall not touch or cross the free-throw line extended into the semicircle until the ball contacts the ring or backboard. Additionally, a player other than the free thrower, who does not occupy a marked lane space, may not have either foot beyond the vertical plane of the free-throw line extended and the three point line which is farther from the basket until the ball touches the ring or backboard or until the free throw ends. ONLY the free thrower is allowed in the semi-circle until the ball is released and touches the ring or the backboard.



**WORK.
PUSH.
SWEAT.
PULL.
BREATHE.
DREAM.
PLAY.
WIN.**



SUBWAY® restaurants are proud to provide scholarships to California's hard-working student athletes through the CIF & SUBWAY® Spirit of Sport Award. Join us in supporting their amazing accomplishments on and off the field.

©2015 Doctor's Associates Inc. SUBWAY® is a registered trademark of Doctor's Associates Inc.

SUBWAY
SUBWAY. WHERE WINNERS EAT.®

COACHES' BOX

As approved by the State Federated Council, the coaching box, under provisions of National Federation Rules and Regulations, has been adopted for all boys and girls contests in the State of California.

* * * * *

14-FOOT COACHES' BOX

1. The 2" line (to mark the box) begins off the court 28' from the end line and extends 14' toward the end line.
2. The lines are within the 14' width.
3. The length of the box depends on how far the bench is from the sideline. It extends to the bench.
4. Tape may be used instead of permanent paint.

Following is a list of guidelines for those courts which are not typical or have problems relative to placement of the box.

GUIDELINES FOR SETTING THE COACHES BOX

In a gym that does not fit the normal situation the following guidelines should be used in marking the coaches' box:

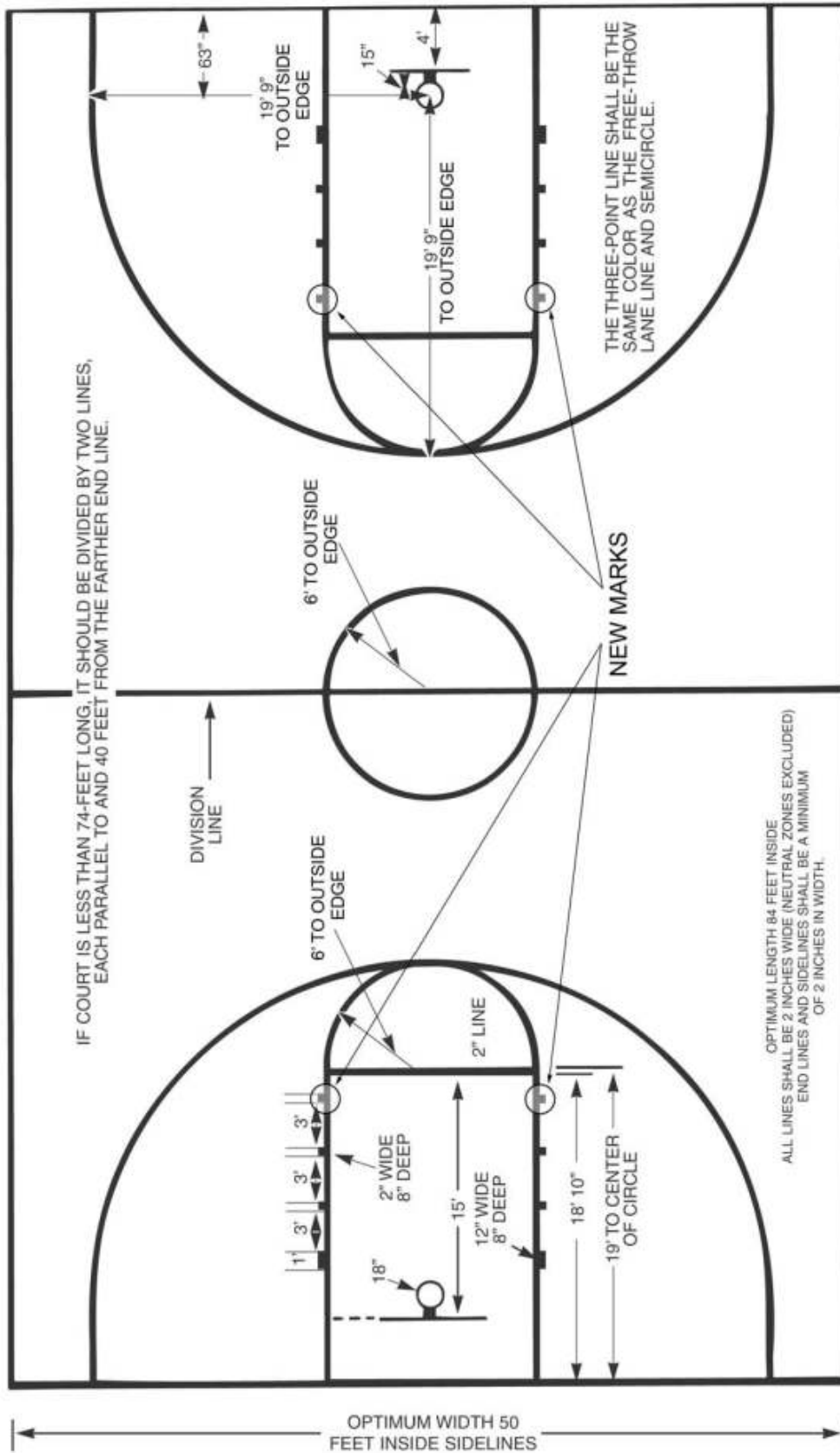
The coaches' box should be placed so that the head coach is removed from scorers' table area. This enables communications between officials and scorers to be handled in a much easier fashion.

- a. If the scorers' table is not at the center of the court and is on the sideline, both coaches' box will be moved the same direction and distance as the scorer's table is offset.
- b. If the scorer's table extends beyond the mid-court lines in both directions, the coaches' box shall start at the end of the table.
- c. In some cases the determination of the coaches' box will present problems due to the structure of the gym. For example, this may place one bench and coaches' box right at a supporting beam or aisle. In these cases, schools should contact their state association for instructions as to the placement of the coaches' boxes.

Please call me if you have any questions or if I can be of assistance to you.

BASKETBALL COURT DIAGRAM

(See Rule 1-13 for location and size of optional coaching box)



Left End Shows
Rectangular Backboard
72-Inches Wide

MINIMUM OF 3 FEET
Preferably 10 feet of unobstructed space outside. If impossible to provide 3 feet, a narrow broken 1-inch line should be marked inside the court parallel with and 3 feet inside the boundary.

Right End Shows
Fan Backboard
54-Inches Wide

**SPORTS
AUTHORITY.**



Official Sporting Goods Retailer

GOOD LUCK ATHLETES!



**GET
5%
BACK**

Get 5% Back on apparel, cleats and protective gear when you spend \$100 or more. Join The League today!

sportsauthority.com

CIF RULE MODIFICATIONS

The National Federation (NF) Basketball Rule Book is, and shall be, the official rule book for boys and girls play with the exception of USE OF A SHOT CLOCK FOR BOYS AND GIRLS PLAY, and NFHS Associations provisions which, allow for individual state adoptions of seven specific items covered in the High School Rule Book. The State CIF Federated Council has adopted two of these options as listed below.

STATE ADOPTED OPTIONS:

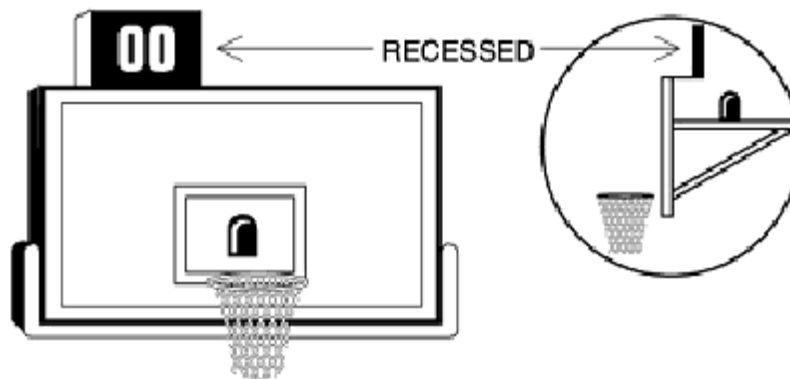
1. The use of a fourteen (14') foot Coaching Box during the game for Head Coaches.
2. The use of a running clock during the fourth quarter when the point spread reaches 40 points.

SHOT CLOCK FOR BOYS AND GIRLS PLAY

RULE 1 - COURT AND EQUIPMENT (ADD THE FOLLOWING SECTION)

SECTION 19 - Shot Clock Displays

ART 1 A visible shot clock is required for high school boys and girls basketball games. When two visible shot clock floor displays are used, they should be placed 6 feet beyond the endlines intersecting the sidelines extended and shall be positioned in the corner of each front court to the right of the basket. The two visible clocks may also be displayed above or behind each backboard, or on scoreboards located at the ends of the court. If this is not possible, an alternative timing device must be available and operated at the scorers table. This may be in the form of a stop watch or stop/start clock, etc.



Rule 1 Section 19

The shot clock shall be recessed on top of each backboard. If it is not possible to recess the clocks, they shall be mounted on the wall and positioned to the left of each basket as viewed from the center of the courts. If impossible to recess or mount on the wall, they shall, as a last resort, be located on the floor at each end of the court.

RULE 2 - OFFICIALS AND THEIR DUTIES (ADD THE FOLLOWING SECTIONS)

SECTION 14 - Shot Clock Time Period

A 35-second shot clock is used in the boys game and a 30-second shot clock is used in girls basketball. The shot clock is used for the entire game, including overtime periods.

SECTION 15 - Duties of the Shot Clock Operator

The shot clock operator shall control a separate timing device which shall have a horn with a different sound from that of the game clock. An alternative timing device shall be available. In addition, the shot clock operator shall:

ART 1 Start the timing device when:

- A) A player in-bounds touches the ball on a throw-in.
- B) A team initially gains possession of the ball from a:
 - 1) jump ball
 - 2) rebound
 - 3) loose ball.

ART 2 Stop the timing device and reset the shot clock:

- A) When team control is re-established after the team loses possession of the ball;
- B) When a foul occurs (except double and simultaneous fouls);
- C) When a held ball occurs (except when the alternating-arrow favors the offensive team);
- D) When a try for goal strikes the ring or flange and then possession is gained by either team;
- E) When a violation occurs (including kick ball)
- F) When an inadvertent whistle occurs and there was no player or team control at the time of the whistle.

Note: The mere touching of the ball by an opponent does not start a new shot-clock period when the same team remains in control of the ball.

ART 3 Stop the timing device and continue time without a reset when play begins under the following circumstances:

- A) The ball is deflected out-of-bounds by a defensive player;
- B) A player is injured or loses a contact lens;
- C) A charged timeout has concluded; and
- D) During team control a defensive player causes a held ball and the alternating-possession arrow favors the offensive team;
- E) After a double personal foul; a double technical foul; or a simultaneous foul when there is team control, play shall be resumed at point of interruption;
- F) After an inadvertent whistle when there is team control;
- G) After a simultaneous held ball occurs during a throw-in and the alternating-possession arrow favors the throw-in team.

Note: The offensive team, upon regaining possession of the ball for the throw-in, shall have the unexpired time on the shot clock at attempt a try.

ART 4 Sound the horn at the expiration of the shot clock period. (This does not stop play unless recognized by the official's whistle.)

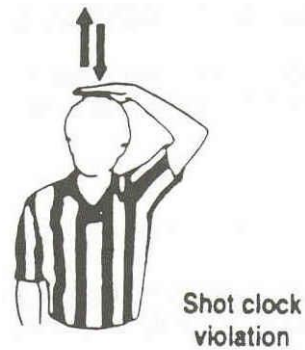
ART 5 Allow the timing device to continue:

- A) During a loose ball situation if the offense retains possession
- B) When a field goal is attempted at the wrong basket
- C) A field goal try does not hit the rim or enter the basket

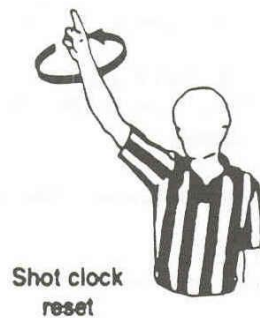
ART 6 Turn off the timing device when the game clock has less time then the shot clock.

D. SIGNALS TO BE USED FOR SHOT CLOCK VIOLATIONS

Boys and **Girls**: The signals are the SAME for both. The following **signals** are to be used **sequentially** when a shot clock violation occurs.



E. SIGNAL TO BE USED TO INDICATE A RESET OF THE SHOT CLOCK



The SHOT CLOCK RESETS when any of these situations occur:

1. The ball hits the rim on a try or tap.
2. A foul by any player
3. A change of possession
4. Kicking of ball by the defense
5. Striking the ball with the fist (any player)
6. Ball passes through the basket from **below**.
7. Other situations when the official needs to direct the shot clock operator to reset the clock.

NOTE: The rule modifications for boys and girls basketball were prepared by CBOA Instructional Chair, Dr. Bill White and Mr. John Lozano, CIF-State Rules Interpreter. Any additional information or questions on this material should be directed to Dr. White at the following address:

Dr. Bill White
25202 Keats Lane
Stevenson Ranch, CA 91381
Phone: (661) 259-0993
FAX: (661) 287-4383

INSTRUCTIONS TO AND DUTIES OF SCORERS FOR BASKETBALL GAMES

RULES COVERAGE:

Rule 2. Section 4 The referee designates the official score book and the official scorer.

Rule 2. Section 11: The duties and responsibilities of the scorers are indicated. In case of doubt, signal the floor official as soon as conditions permit to verify the official's decision.

The Rules Committee strongly recommends that only the official scorer wear a black and white striped garment and his or her location at the scorer's and timer's table be clearly marked.

RESPONSIBILITY:

The scorer's responsibility is so great that floor officials must establish the closest cooperation and understanding with them. Scorers must be accurate.

EQUIPMENT:

Score book, pencils, possession arrow and signaling device with sound different from that of the timer. The score book must be available for inspection at the table from 10 minutes prior to game time until the referee has approved the final score.

BEFORE THE GAME:

1. Ten minutes before scheduled game time, the scorers shall be supplied with each team's roster and numbers.
2. Ten minutes before scheduled game starting time, the scorers shall be supplied with the starting lineup.
3. Notify the referee if either list is not submitted on time or is altered after time specified.
4. If there are discrepancies, notify the referee before the ball is tossed.

DURING INTERMISSIONS:

1. Either the official scorer or a delegated assistant must be at the scorers' table with the official score book at all times.
2. Verify the lineup after all intermissions and notify either floor official if a player, who has not reported, has entered the court.

DURING THE COURSE OF THE GAME:

1. The nonofficial scorers should check each entry with the official score book.
2. The scorers should:
 - a. Announce to each other and record the total running score.
 - b. Announce the name and number of the player who scores.
 - c. Verify the scoreboard score.
 - d. Compare the summary of individual scores with the total running score at the end of the half.
 - e. Exchange the name and number of the player committing a personal foul and indicate the total fouls charged to the player.
 - f. Be responsible for the alternating possession arrow.
3. In case of controversy, the record of the official score book is accepted unless the referee has knowledge which permits him or her to rule otherwise.

SCORING: (Use the following recommended symbols.)

1. P for personal foul, followed by proper numeral indicating number of personal fouls charged to player as P , P , etc. or cross out appropriate number.
2. T for technical foul.
3. Successful field goal: figure 2. or 3.
4. Free throw attempt:
5. Successful free throw:
6. 2 free throws awarded:
7. First of one-and-one:
First made, bonus awarded:
Bonus free throw made:
8. List the number of charged time-outs for each team.
9. Check the scoreboard often and have the progressive team totals available at all times. Points scored in the wrong basket are never credited to a player but are credited to the team in a footnote. Points awarded for basket interference or goal-tending by the defense are credited to the thrower. When a live ball goes in the basket, the last player who touched the ball causes it to go there.

NOTIFY THE NEARER OFFICIAL WHEN:

1. The bonus penalty is in effect, and the proper bonus panel (H for home and V for visitors) shall be displayed, immediately after the penalty has been administered for a team's 4th personal foul in a given half (for games played in quarters) or 6th personal foul (for games played in halves). When a team's bonus panel (H or V) is on display, it indicated to the official that their opponents shall be entitled to a 2nd free throw for all common fouls (excluding player control fouls) for which the 1st free throw is successful. Another widely used method is as follows: When a team is to receive a bonus throw, a light or device nearest its basket is displayed.
2. Any player is charged with his or her 5th personal foul or the 3rd technical foul is charged to any squad member of bench personnel.
3. Either team has 4 time-outs charged or an excess time-out.
4. The ball is dead or in control of offending players team if:
 - a. player has not reported;
 - b. player's number changed without reporting
 - c. player is illegally in game.
5. The ball is dead if there is a score dispute or doubt about an official's decision.
6. Any player enters while wearing an illegal number.
7. The ball is dead and the clock is stopped or running, if the coach requests that a correctable error as in 2-10, or a timing scoring or alternating possession mistake be prevented or rectified.

SUBSTITUTIONS:

1. A substitution may be made when the ball is dead and time is out. A player who has been withdrawn may not reenter before the next opportunity to substitute after the clock has been properly started following the player's replacement.
2. A substitute who is entitled and ready to enter must report to the official scorer. However, substitutions between halves shall be made to the official scorer by the substitute(s) or a team representative prior to the signal which ends the intermission.
3. A substitute enters and must withdraw before a jump ball or free throw is administered, the substitute may not reenter until the next dead ball and time is out.
4. If a substitute enters and must withdraw before a jump ball or free throw is administered, the substitute may not reenter until the next dead ball and time is out.
5. A substitute may be beckoned after any successful free throw or after the first throw of a multiple throw, or after any throw for a false double foul except the last throw when the ball is to remain alive if the throw is unsuccessful but touches the ring.
It is not permissible for a substitute to replace a designated jumper, or a free thrower when the free throw is for a personal foul unless such jumper or thrower is disqualified or injured. The scorer should not signal after the free thrower or thrower-in has been handed the ball or the ball is at the disposal of such player or team, or until the official has completed reporting a foul.

INSTRUCTIONS TO AND DUTIES OF TIMERS FOR BASKETBALL GAMES

RULES COVERAGE:

Rule 2. Section 4: Instruct the referee to designate the official timepiece and its operator. The second timer should assume responsibilities of operating the time-out stop watch and checking the official timepiece.

Rule 2. Section 12: Duties and responsibilities of timers are indicated. An efficient timer will carefully study these sections and become thoroughly familiar with all their aspects. The timer shall sound a warning signal 15 seconds before the end of an intermission or a charged time-out and signal the referee when it is time to resume play following a charged time-out or intermission or the 30 seconds allowed to replace a disqualified or injured player.

EQUIPMENT:

Electric clock timer and one stopwatch, or a table clock timer and one or two stopwatches. A gong, loud siren or electric air horn to signal the end of playing time.

BEFORE THE GAME:

1. The official timer should ascertain the game starting time and suggest that the referee and coaches synchronize their watches.
2. Review the official signals for starting the clock, time-out a foul or violation.
3. Locate the dressing rooms and notify the scorers 10 minutes prior to the starting time.

TIMING REGULATIONS:

1. Playing time shall be:
 - a. For teams of high school age - 4 quarters of 8 minutes each with intermissions of 1 minute after the 1st and 3rd quarters and 10 minutes between halves.
 - b. For teams younger than in (a) - 4 quarters of 6 minutes each with intermissions same as for (a).
 - c. For teams of college - 2 halves of 20 minutes each with an intermission of 15 minutes between halves.
2. Overtime Play:
 - a. If the score is tied at the end of the 2nd half, play shall continue without change of baskets for one or more extra periods, with a 1 minute intermission before each.
 - b. In games played in quarters, the length of each extra period shall be 3 minutes.
 - c. In games played in halves, the length of each extra period shall be 5 minutes.
 - d. As many such extra periods as are needed to break the tie shall be played. Game ends, if, at end of any extra period, the score is not tied.
3. A time-out charged to a team is of 1 minute duration unless both teams are ready to resume play sooner.
4. No time-out is charged to a team when:
 - a. An injured player is ready to play immediately or is replaced until at least the next opportunity to substitute after the clock has been properly started following his or her replacement.
 - b. The floor official grants a player's request because of displaced eyeglasses or lens.
 - c. A correctable error as in 2-10, or a timing, scoring, or alternating possession mistake has been prevented or rectified.
5. The sounding of the scorer's signal does not cause the game timepiece to be stopped.

START THE OFFICIAL TIMEPIECE WHEN:

1. A tossed ball is legally tapped when play is started by a umpire.
2. The ball touches a player on the court during a throw-in (if clock has been stopped).
3. An official signals "start the clock". If he or she neglects to do so, the official timepiece should be started unless an official specifically signals that it should not be started.
4. The ball touches or is touched by a player on the court provided the ball is to remain alive if the free throw is missed. In these cases, the official will give the start the clock signal, but if he or she neglects to do so, the official timepiece should be started when it is apparent the ball touches a player and is to remain alive.

STOP THE OFFICIAL TIMEPIECE WHEN:

1. Any period ends.
2. An official gives a time-out signal. The official will order time-out

when:

- a. A foul is called by holding hand with fingers closed at arm's length above head.
- b. A jump ball is declared by giving the jump ball signal (holding thumbs up at shoulder height away from body and motioning upward with both arms extended).
- c. A violation occurs by giving the time-out signal (holding hand with fingers extended at arm's length above head) after which the proper violation signal is given.
- d. There is to be a charged time-out, or an official's time-out for a technical foul, or other stoppage indicated by a floor official who holds a hand at arm's length above the head with fingers extended.

NEAR THE END OF PLAYING TIME:

1. If a watch is being used as the official timepiece, place it so both timers may see it and the ball. The watch must be stopped the instant the signal ending the game is sounded.
2. When an timing device other than a watch is the official timepiece, the timers must coordinate their efforts in determining the position of the ball when time expires.
3. Some timers, in order to avoid misunderstanding concerning the position of the ball when time expires, have one timer watch the official timepiece and count aloud 10-9-8-7, etc., while the other timer watches the ball and notes its position at the exact moment time expires.
4. If a quarter or extra period ends and:
 - a. The timer has been unable to make an official hear the signal, the timer must immediately notify the official.
 - b. The timing signal fails or is not heard by an official, the timer must be prepared to advise the referee as to whether the ball was in flight when time expired, or whether a foul occurred before or after the period had ended.
 - c. The timing signal is not heard by the officials, testimony of the timers may determine whether a score shall count or a foul shall be charged, unless the referee has information which would alter the situation.



JL CUSTOM JACKETS

OFFICIAL LICENSED PATCH
AND JACKET MANUFACTURER



You can design and purchase your own custom patches on our website.

VARSITY JACKET SPECIAL

\$245.00

WOOL BODY WITH LEATHER SLEEVES AND POCKETS

VARSITY LETTER SEWN ON FRONT

MAKE AND SEW ON UP TO 3 SPORT EMBLEMS

EMBROIDER FIRST NAME, SCHOOL NAME, MASCOT NAME AND 1 SPORT ONTO THE FRONT

CREATE AND SEW ON A CUSTOM GRADUATING YEAR



STANDARD GIRLS PACKAGE:

\$ 230.00

ALL WOOL BODY AND SLEEVES WITH A WOOL HOOD

To Order Call:

(951) 867-3200

or visit us on the web:

www.jlcustomjackets.com

7161 Old 215 Frontage Road, Moreno Valley, CA

Fax (951) 867-3277



• PRICES ARE SUBJECT TO CHANGE WITHOUT NOTICE •

BUTTERY JACK™

WITH GARLIC
HERB BUTTER



**TELL YOUR MOUTH
TO BRING ITS A GAME**

2015-16 CIF SOUTHERN SECTION FORD BOYS BASKETBALL CHAMPIONSHIPS
(Schools from these divisions will be considered for placement in Division II State Championships)

▲-Moved up by criteria

▼-Moved down by criteria

DIVISION 1AA
(4701-3000)

Aliso Niguel
 Anaheim
 Bishop Montgomery ▲
 Buckley ▲
 Canyon/Anaheim ▲
 Centennial/Corona
 Chaparral
 Chino Hills
 Compton ▲
 Damien (B) ▲
 Diamond Bar
 Downey
 Etiwanda
 Fountain Valley
 Great Oak
 Jordan
 King, M.L.
 Knight
 Lakewood
 Los Alamitos
 Los Osos
 Mater Dei ▲
 Millikan
 Mission Prep ▲
 Montclair
 North, J.W. ▲
 Pacifica/Oxnard
 Poly/Long Beach
 Quartz Hill
 Rancho Cucamonga
 Rancho Verde
 Redondo Union ▲
 Roosevelt
 San Clemente
 Santa Margarita ▲
 Santiago/Corona
 Sonora ▲
 St. John Bosco (B) ▲
 Trinity Classical ▲
 Tustin ▲
 Upland
 Valencia/Valencia
 Villa Park ▲
 Village Christian ▲
 Warren
 Wilson/Long Beach
 Windward ▲

DIVISION 1A
(2999-2571)

Alhambra
 Arcadia ▼
 Arroyo Valley
 Beaumont
 Beckman
 Bell Gardens ▼
 Burroughs/Burbank
 Cabrillo/Long Beach
 Cajon
 California
 Camarillo
 Chaffey ▼
 Corona
 Crescenta Valley
 Cypress
 Dana Hills
 El Rancho
 Foothill ▲
 Glendale
 Heritage
 Highland
 Huntington Beach
 Katella
 La Quinta/La Quinta
 La Serna
 Montebello
 Oxnard
 Palmdale
 Paloma Valley
 Paramount ▼
 Peninsula
 Pioneer Valley
 Poly/Riverside
 Rialto
 Santa Ana
 Santa Monica
 Schurr
 Summit
 Temecula Valley
 Temescal Canyon
 Trabuco Hills
 Troy
 University
 Valencia/Placentia
 Valley View
 Ventura
 Vista Murrieta ▼
 Walnut
 Westlake ▲
 Westminster

2015-16 CIF SOUTHERN SECTION FORD BOYS BASKETBALL CHAMPIONSHIPS
(Schools from these divisions will be considered for placement in Division III State Championships)

DIVISION 2AA
(2530-2300)

Alta Loma
Arroyo
Arroyo Grande
Ayala
Buena
Burbank
Canyon/Canyon Country
Capistrano Valley
Chino
Citrus Hill
Claremont
Eastside
Edison
Eisenhower
El Toro
Garden Grove
Glendora
Godinez
Hemet
Kaiser
Lancaster
Loara
Loyola (B)
Mark Keppel
Miller, AB
Mira Costa
Mission Viejo
Moreno Valley
Murrieta Valley
Newbury Park
Newport Harbor
Oak Hills
Ontario
Perris
Redlands
Rowland
San Juan Hills
Santa Fe
Santa Maria
Saugus
Segerstrom
Tesoro
Thousand Oaks
West Covina
West Ranch
Woodbridge
Yucaipa ▼

DIVISION 2A
(2299-2100)

Agoura
Apple Valley
Canyon Springs ▼
Carter ▼
Cerritos
Channel Islands ▼
Citrus Valley
Coachella Valley ▼
Dos Pueblos
El Modena
Elsinore
Fontana ▼
Fullerton
Grand Terrace
Hart
Hawthorne
Kennedy ▼
La Habra
La Mirada
La Quinta/Westminster
Lawndale
Lynwood
Marina ▼
Mayfair
Murrieta Mesa
Norco
Norte Vista
Northwood
Ramona
Redlands East Vly
Rio Mesa
Royal
San Gabriel ▼
San Jacinto ▼
Santa Barbara
Santiago/Garden Grove
Serrano
Silverado
Simi Valley
Sunny Hills
Temple City
Torrance
Vista Del Lago
Western
Whittier

2015-16 CIF SOUTHERN SECTION FORD BOYS BASKETBALL CHAMPIONSHIPS
(Schools from 3AA division will be considered for placement in Division III State Championships)
(Schools from 3A division will be considered for placement in Division IV State Championships)

DIVISION 3AA
(2099-1850)

Arlington
Baldwin Park
Bloomington
Bolsa Grande
Bonita
Brea Olinda
Buena Park
Calabasas ▲`
Cathedral (B) ▲
Cathedral City
Century
Colony
Colton
Culver City
DaVinci Design
Dominguez
El Dorado
El Monte
Esperanza
Firebaugh
Gahr
Hesperia
Hueneme
Irvine
Jurupa Hills
La Sierra
Lakeside
Los Altos
Moorpark
Nogales
North Torrance
Norwalk
Oak Park ▲
Palm Desert
Pasadena
Paso Robles
Patriot
Righetti
San Geronio
San Marcos
Savanna
Sierra Vista
South Torrance
Sultana
Victor Valley
West Torrance

DIVISION 3A
(1849-1401)

Adelanto
Antelope Valley
Bellflower
Beverly Hills
Bishop Amat
Cabrillo/Lompoc
Chaminade ▲
Charter Oak
Corona del Mar
Crespi (B) ▲
Desert Mirage ▼
Diamond Ranch
Don Lugo
Gabrielino
Garey
Glenn
Golden Valley ▼
Hillcrest
Hoover
Indio
Inglewood
Jurupa Valley
Laguna Hills
Leuzinger
Los Amigos
Magnolia
Monrovia
Mountain View
Ocean View
Orange ▼
Pacifica/Garden Grove
Palm Springs
Palos Verdes
Pioneer
Rancho Alamitos
Rancho Mirage
Rosemead
Saddleback
San Bernardino
Santa Ana Valley ▼
Santa Paula
Servite (B)
Shadow Hills
South El Monte
South Hills
South Pasadena
Tahquitz
West Valley
Wilson/Hacienda Heights
Yorba Linda

2015-16 CIF SOUTHERN SECTION FORD BOYS BASKETBALL CHAMPIONSHIPS
(Schools in these divisions will be considered for placement in Division IV State Championships)

DIVISION 4AA
(1409-1000)

Alemanay
Animo Leadership
Artesia
Atascadero
Banning
Barstow
Bassett
Burroughs/Ridgecrest
Cantwell Sacred Heart ▲
Costa Mesa
Covina
Desert Hot Springs ▼
El Segundo
Estancia
Excelsior Charter
Foothill Tech
Ganesha
Gladstone
Granite Hills ▼
Harvard Westlake
Indian Springs ▼
J Serra
La Canada
La Puente
Laguna Beach
Littlerock ▼
Lompoc
Lutheran/Orange
Marshall
Nipomo
Northview
Notre Dame/Sherman Oaks
Pacific
Pomona
Rim of the World
Rubidoux ▼
San Dimas
San Gabriel Academy ▲
San Luis Obispo ▼
San Marino
Santa Ynez
Serra ▲
St. Francis (B)
Workman
Yucca Valley

DIVISION 4A
(999-490)

Azusa ▼
Big Bear
Calvary Chapel/Santa Ana
Campbell Hall
CAMS
Carpinteria
Centennial/Compton
Crean Lutheran
Crossroads
Don Bosco Tech (B)
Duarte
Environmental Charter
Fairmont Prep
Fillmore
Heritage Christian
La Salle
Lennox Academy
Malibu
Maranatha
Mary Star of the Sea
Milken Community
Morningside
Morro Bay
Muir
Nordhoff
Notre Dame/Riverside
Nuvview Bridge
Oaks Christian
Orcutt Academy
Palmdale Aerospace Academy
Paraclete
Riverside Prep
Sage Hill
Salesian (B)
Southlands Christian
St. Anthony
St. Bonaventure
St. Genevieve
St. Monica Catholic
St. Paul
Templeton
Twentynine Palms
University Prep
Valley Christian/Cerritos
Verbum Dei (B)
Viewpoint
Whitney
Whittier Christian
Xavier Prep

2015-16 CIF SOUTHERN SECTION FORD BOYS BASKETBALL CHAMPIONSHIPS
(Schools above 600 will be considered for placement in Division IV State Championships)
(Schools below 600 will be considered for placement in Division V State Championships)

DIVISION 5AA
(489-260)

Academy Acad Excel
Academy Careers/Exploration
Arrowhead Chr. Acad.
Blair ▼
Brentwood
California Military
Cate
Chadwick
Cobalt Insitutte (new)
Desert
Desert Christian/Lancaster
DeToledo(New Comm. Jewish)
Edgewood ▼
Einstein, Albert
Flintridge Prep
Grace Brethren
Hamilton
Linfield Christian
Loma Linda Academy
Mammoth
Oakwood
Ontario Christian
Oxford Academy ▼
Pacific Lutheran
Poly/Pasadena
Providence(Burbank)
Saddleback Valley Chr
Samueli Acd.(Ac.Chatr-new)
San Jacinto Valley Ac
Santa Clara
Santa Rosa Academy
Sherman Indian
Sierra Canyon
Silver Valley
St. Joseph/Santa Maria
St. Margaret's
St. Pius X-St. Matthias
Temecula Prep
Vasquez
Villanova Prep
Vistamar
Webb
Western Christian
Woodcrest Christian
Yeshiva

DIVISION 5A
(259-131)

AGBU/Canoga Park
AGBU/Pasadena
Aquinas ▼
Avalon
Aveson Global Leadership (new)
Bishop Diego
Bloomington Christian
Boron
Boys Republic
Brethren Christian
Calvary Chapel/Downey ▼
Calvary Murrieta ▼
Capistrano Vly Chr
Coast Union
CSDR
Emerson Honors
Executive Prep (new)
Faith Baptist
Guidance Charter
Holy Martyrs
Immanuel Christian
La Sierra Academy
Laguna Blanca
Le Lycee
Lucerne Valley
Lycee International (new)
New Roads ▼
Orangewood Academy ▲
Pacifica Christian S.M.
Pilibos
Public Safety Academy
Rancho Christian
Redlands Adventist Ac
Ribet Academy
River Springs Charter (new)
RiversideCnty Ed Acad. (new)
Rolling Hills Prep
Santa Clarita Christian
Santa Clarita Valley
Shalhevet
St. Bernard
Tarbut V'Torah
Thacher
Upland Christian Academy
Valley Torah (B)
Wildwood

2015-16 CIF SOUTHERN SECTION FORD BOYS BASKETBALL CHAMPIONSHIPS
(Schools from this division will be considered for placement in Division V State Championships)

DIVISION 6
(130-14)

Acaciawood Academy	Maricopa ▼
Antelope Valley Chr	Mesa Grande Acad.
Apple Valley Christian	Mesrobian ▼
Baker Valley	Midland ▼
Bell Jeff	Mojave ▼
Besant Hill	New Covenant Academy
Bethel Baptist	New Harvest Christian ▼
Bethel Christian/Lancaster ▼	Newbury Park Adv.
Bethel Christian/Riverside	Noli Indian
Big Pine ▼	North County Christian
Bridges Academy ▼	Ojai Valley ▼
California Lutheran	Pacific Hills
Calvary Baptist	Pacifica Christian O.C.(new)
Calvary Chapel/Moreno Vly ▼	Packinghouse Chr
Calvary Christian ▼	Padre Pio Academy ▼
Christa McAuliff(Kilpatrick-(B) ▼	Palm Valley
Coastal Christian ▼	Pathways Community (new)
Concordia/Sylmar ▼	Pilgrim
Cornerstone Chr/Wildomar	Price
Cornerstone Chr-Hemet(Bapt Chr)	Providence (Santa Barbara)
Crossroads Christian	Renaissance Academy
Cuyama Valley ▼	Rio Hondo Prep
Delphi Academy	Riverside Christian
Desert Chapel	San Fernando Acad.
Desert Christian Academy	Shandon
Dunn ▼	Shepherds Grove (CrstCath) ▼
Eastside Christian	SLO Academy
Faith Baptist Academy ▼	Southwestern Acad.
Garden Street Academy	St. Michael's Prep
Glendale Adventist ▼	St. Monica Academy
Grove ▼	Summit View
HelpGroupWest(VilgGlnWst) ▼	Summit View-Westview ▼
Hesperia Christian	Trona
Highland Hall ▼	Valley Christian/Santa Maria
Hillcrest Chr/Thousand Oaks	Victor Valley Chr ▼
Joshua Springs	Village Glenn ▼
Judson International (new)	Waverly
Lake Arrowhead Chr	Weaver ▼
Lancaster Baptist	Westmark
Lee Vining	Zinsmeyer ▼
Liberty Christian	
Lone Pine	
Los Angeles Adventist	
Lutheran/LaVerne	

2015-16 CIF SOUTHERN SECTION FORD GIRLS BASKETBALL CHAMPIONSHIPS
(Schools from these divisions will be considered for placement in Division II State Championships)

DIVISION 1AA
(4505-3160)

Alemanay ▲
Anaheim
Arcadia
Bishop Montgomery ▲
Canyon Springs ▲
Centennial/Corona
Chaffey
Chaminade ▲
Chaparral
Culver City ▲
Downey
El Dorado ▲
Etiwanda
Fairmont Prep ▲
Fountain Valley
Great Oak
J Serra ▲
Jordan
King, M.L.
Lakewood
Los Alamitos
Los Osos
Lynwood ▲
Mater Dei ▲
Millikan
Oranewood Academy ▲
Pacifica/Oxnard
Poly/Long Beach
Rancho Cucamonga
Rancho Verde
Redondo Union ▲
Ribet Academy ▲
Roosevelt
Santa Barbara ▲
Santa Margarita ▲
Santiago/Corona
Serra ▲
Sierra Canyon ▲
Troy ▲
Upland
Valencia/Valencia
Ventura ▲
Vista Murrieta
Warren
West Torrance ▲
Wilson/Long Beach
Windward ▲

DIVISION 1A
(3159-2561)

Aliso Niguel
Arroyo Valley
Beaumont
Beckman
Burroughs/Burbank
Cajon
California
Camarillo
Chino Hills
Crescenta Valley
Cypress
Dana Hills
Diamond Bar
El Rancho
Glendale
Glendora
Heritage
Highland
Huntington Beach
Katella
Knight
La Quinta/La Quinta
La Serna
Mira Costa ▲
Montebello
Oxnard
Palmdale
Paloma Valley
Paramount ▼
Peninsula
Pioneer Valley
Poly/Riverside
Quartz Hill
Rialto
San Clemente
Santa Maria
Schurr
Summit
Temecula Valley
Temescal Canyon
Trabuco Hills
University
Valencia/Placentia
Valley View
Villa Park
Walnut
Westminster
Yucaipa

2015-16 CIF SOUTHERN SECTION FORD GIRLS BASKETBALL CHAMPIONSHIPS
(Schools from these divisions will be considered for placement in Division III State Championships)

DIVISION 2AA
(2560-2350)

Alhambra ▼
Alta Loma
Arroyo Grande
Ayala
Bell Gardens ▼
Buena
Burbank
Cabrillo/Long Beach ▼
Canyon/Canyon Country
Capistrano Valley
Carter
Channel Islands
Chino
Citrus Hill
Corona ▼
Edison
Eisenhower
El Toro
Fontana
Foothill
Garden Grove
Godinez
Hemet
Kaiser
Kennedy
Marina
Mark Keppel ▲
Miller, AB
Mission Viejo
Montclair ▼
Moreno Valley
Murrieta Valley
Newbury Park
North Torrance ▲
North, J.W. ▲
Oak Hills
Ontario
Perris
San Jacinto
San Juan Hills
Santa Ana ▼
Santa Fe
Santa Monica ▼
Saugus
Segerstrom
Tesoro
West Covina
West Ranch
Woodbridge

DIVISION 2A
(2349-2100)

Agoura
Apple Valley
Arroyo
Canyon/Anaheim
Cerritos
Citrus Valley
Claremont
Coachella Valley
Dos Pueblos
Eastside
El Modena
Elsinore
Fullerton
Grand Terrace
Hart
Hawthorne
La Habra
La Mirada
La Quinta/Westminster
Lancaster ▼
Lawndale
Loara ▼
Mayfair
Murrieta Mesa
Norco
Northwood
Ramona
Redlands
Redlands East Vly
Rio Mesa
Rowland
Royal
San Gabriel
Serrano
Silverado
Simi Valley
Sunny Hills
Temple City
Thousand Oaks
Torrance
Tustin
Vista Del Lago
Western
Westlake ▼
Whittier

2015-16 CIF SOUTHERN SECTION FORD GIRLS BASKETBALL CHAMPIONSHIPS
(Schools from 3AA division will be considered for placement in Division III State Championships)
(Schools from 3A division will be considered for placement in Division IV State Championships)

DIVISION 3AA
 (2349-2100)

Arlington
 Baldwin Park
 Bonita
 Brea Olinda
 Cathedral City
 Colony
 Da Vinci Design
 Desert Hot Springs
 Diamond Ranch
 El Monte
 Esperanza
 Firebaugh
 Gabrielino
 Gahr
 Golden Valley
 Hillcrest
 Indio
 Irvine
 Jurupa Hills
 La Sierra
 Lakeside
 Los Altos
 Los Amigos
 Lutheran/Orange ▲
 Magnolia
 Monrovia
 Moorpark
 Newport Harbor ▼
 Nogales
 Norte Vista ▼
 Norwalk
 Orange
 Pacifica/Garden Grove
 Palm Desert
 Palm Springs
 Pasadena
 Patriot
 Rancho Alamitos
 Rosemead
 San Geronio
 Santa Ana Valley
 Santiago/Garden Grove ▼
 Savanna
 Shadow Hills
 Sonora
 South Hills
 South Torrance
 Sultana
 Victor Valley
 Yorba Linda

DIVISION 3A
 (1764-1371)

Antelope Valley
 Azusa
 Barstow
 Bellflower
 Beverly Hills
 Bishop Amat
 Bloomington ▼
 Bolsa Grande ▼
 Buena Park ▼
 Burroughs/Ridgecrest
 Cabrillo/Lompoc
 Calabasas
 Century ▼
 Charter Oak
 Colton ▼
 Compton
 Corona del Mar
 Desert Mirage ▼
 Dominguez ▼
 Don Lugo
 Excelsior Charter
 Granite Hills
 Hesperia ▼
 Hueneme ▼
 Indian Springs ▼
 Inglewood
 Jurupa Valley
 La Canada
 Laguna Hills
 Leuzinger
 Oak Park
 Oaks Christian ▲
 Ocean View
 Pacific
 Palos Verdes
 Paso Robles ▼
 Pioneer
 Rancho Mirage
 Righetti ▼
 Rubidoux
 Saddleback
 San Bernardino
 San Luis Obispo
 San Marcos ▼
 Santa Paula
 Sierra Vista ▼
 South El Monte
 South Pasadena
 Tahquitz
 Wilson/Hacienda Heights

2015-16 CIF SOUTHERN SECTION FORD GIRLS BASKETBALL CHAMPIONSHIPS
(Schools in these divisions will be considered for placement in Division IV State Championships)

DIVISION 4AA
(1370-770)

Adelanto ▼
Artesia ▼
Atascadero
Banning
Bassett
Centennial/Compton
Costa Mesa
Covina
Duarte
El Segundo
Estancia
Fillmore
Flintridge- Sacred Heart (G)
Foothill Tech
Ganesha
Garey ▼
Gladstone
Glenn ▼
Harvard Westlake
Hoover ▼
Immaculate Heart (G)
La Puente ▼
La Reina (G)
Laguna Beach
Littlerock ▼
Lompoc
Marshall
Marymount (G)
Morro Bay
Mountain View ▼
Muir
Nipomo
Northview
Notre Dame/Sherman Oaks
Pomona
Rosary (G)
San Dimas
San Marino
Southlands Christian
St. Joseph's(Lakewood)(G)
St. Lucy's Priory (G)
St. Monica Catholic ▲
St. Paul ▲
West Valley ▼
Workman
Yucca Valley

DIVISION 4A
(769-460)

Animo Leadership ▼
Archer School for Girls (G)
Big Bear
Bishop Conaty-Loretto (G)
Brentwood
California Military
Campbell Hall
CAMS
Cantwell Sacred Heart
Carpinteria
Crean Lutheran
Crossroads
Edgewood ▼
Environmental Charter
Heritage Christian
La Salle
Lennox Academy
Louisville (G)
Malibu
Maranatha
Marlborough (G)
Mary Star of the Sea
Mayfield (G)
Milken Community
Morningside ▼
Nordhoff ▼
Notre Dame Academy (G)
Notre Dame/Riverside
Nuviev Bridge
Palmdale Aerospace Acad (new)
Paraclete
Rim of the World ▼
Riverside Prep
Sage Hill
San Gabriel Mission (G)
Santa Ynez ▼
St. Anthony
St. Bonaventure
St. Genevieve
St. Margaret's
St. Mary's Academy(G)
Templeton
Twentynine Palms
University Prep
Valley Christian/Cerritos
Viewpoint
Westridge (G)
Whitney
Whittier Christian

2015-16 CIF SOUTHERN SECTION FORD GIRLS BASKETBALL CHAMPIONSHIPS
(Schools above 600 will be considered for placement in Division IV State Championships)
(Schools below 600 will be considered for placement in Division V State Championships)

DIVISION 5AA

(459-255)

Academy Acad Excel
 Academy Careers/Exploration
 AGBU/Canoga Park ▲
 Aquinas
 Arrowhead Chr. Acad.
 Blair ▼
 Buckley
 Calvary Chapel/Downey
 Calvary Chapel/Santa Ana ▼
 Cate
 Chadwick
 Cobalt Institute (new)
 Connelly (G)
 Desert
 Desert Christian/Lancaster
 Einstein, Albert
 Flintridge Prep
 Hamilton
 Holy Family (G)
 Linfield Christian
 Loma Linda Academy
 Mission Prep
 New Roads
 Ontario Christian
 Orcutt Academy ▼
 Oxford Academy ▼
 Poly/Pasadena
 Providence (Burbank)
 Rio Hondo Prep ▲
 Sacred Heart of Jesus (G)
 Saddleback Valley Chr
 Samueli Acad.(Ac. Chatr-new)
 San Jacinto Valley Ac
 Santa Clara
 Santa Rosa Academy ▼
 Sherman Indian
 Silver Valley
 St. Joseph/Santa Maria
 St. Pius X-St. Mathias
 Temecula Prep
 Thacher
 Vasquez
 Village Christian
 Villanova Prep
 Vistamar
 Webb
 Western Christian
 Woodcrest Christian
 Xavier Prep ▼

DIVISION 5A

(254-125)

AGBU/Pasadena
 Alverno (G) ▼
 Anaheim Discovery Christian
 Avalon
 Aveson Global Leadership (new)
 Bishop Diego
 Bloomington Christian
 Boron
 Calvary Murrieta ▼
 Capistrano Vly Chr
 Coast Union
 CSDR
 DeToledo(New Comm. Jewish) ▼
 Executive Prep
 Faith Baptist
 Glendale Adventist
 Grace Brethren ▼
 Guidance Charter
 Holy Martyrs
 Immanuel Christian
 La Sierra Academy
 Le Lycee
 Lone Pine
 Lucerne Valley
 Lycee International
 Mammoth ▼
 Newbury Park Adv.
 Oakwood ▼
 Pacific Lutheran ▼
 Pacifica Christian - S.M.
 Pilibos
 Pomona Catholic (G) ▼
 Ramona Convent (G) ▼
 Redlands Adventist Ac
 River Springs Charter School
 Riverside County Ed. Ac.
 Rolling Hills Prep
 San Gabriel Academy ▼
 Santa Clarita Christian
 Santa Clarita Valley Acd.(new)
 Shalhevet
 St. Bernard
 Tarbut V'Torah
 Trinity Classical Acad
 Valley Christian/Santa Maria ▲
 Wildwood
 Yeshiva ▼

2015-16 CIF SOUTHERN SECTION FORD GIRLS BASKETBALL CHAMPIONSHIPS
(Schools from this division will be considered for placement in Division V State Championships)

DIVISION 6

(124-16)

Antelope Valley Chr ▼	Los Angeles Adventist
Apple Valley Christian	Lutheran/LaVerne
Baker Valley	Maricopa ▼
Bell Jeff	Mesa Grande Acad.
Besant Hill ▼	Mesrobian ▼
Bethel Baptist	Midland
Bethel Christian/Lancaster ▼	Mojave ▼
Bethel Christian/Riverside ▼	New Harvest Christian
Big Pine	Noli Indian
Brethren Christian ▼	North County Christian ▼
California Lutheran	Ojai Valley ▼
Calvary Baptist	Pacific Hills
Calvary Chapel/Moreno Valley ▼	Pacifica Christian - O.C.
Calvary Christian ▼	Packinghouse Chr
Coastal Christian	Palm Valley
Concordia/Sylmar	Pathways Community (9th)
Cornerstone Chr/Wildomar	Pilgrim
Cornerstone Chrst. (Hemet) Bap Chr.	Price
Crossroads Christian	Providence (Santa Barb)
Cuyama Valley	Public Safety Academy ▼
Delphi Academy ▼	Rancho Christian ▼
Desert Chapel	Renaissance Academy
Desert Christ Academy	Riverside Christian
Dunn ▼	San Fernando Acad. ▼
Eastside Christian	Shandon
Faith Baptist Academy	Shepherds Grove(CrystlCath)
Garden Street Academy ▼	SLO Academy (new)
Grove ▼	Southwestern Acad. ▼
Hesperia Christian	St. Monica Academy
Highland Hall	Summit View ▼
Hillcrest Chr/Thousand Oaks ▼	Summit View-Westview ▼
Joshua Springs	Trona
Judson International	Upland Christian ▼
Laguna Blanca ▼	Victor Valley Chr ▼
Lake Arrowhead Chr	Village Glen ▼
Lancaster Baptist	Waverly
Lee Vining	Zinsmeyer Academy▼
Liberty Christian	

SANCTIONED EVENTS: FOR THE MOST UP-TO-DATE LISTING OF APPROVED TOURNAMENTS, VISIT OUR WEBSITE WWW.CIFSS.ORG THROUGH WWW.CIFSSHOME.ORG. CLICK ON THE LINK FOR THE ADMINISTRATIVE SITE, THEN SCROLL ON THE LEFT SIDE OF THE SCREEN FOR SANCTIONED EVENTS.



**LEGACIES
START BEFORE
ANYONE ELSE
CAN SEE THEM.**

What will *your* legacy be?

“I wanted to take control of my life. Gold’s Gym helped me accomplish that and so much more.”

Dominique Brooks
lost 55 pounds and 2.9% body fat in just 12 weeks. His Legacy: Son, Solomon Brooks

15 Los Angeles Area Locations.

Get to know us with a **FREE VIP PASS** at goldsgym.com

50 YEARS
A Legacy of Strength Since 1965



CIF SOUTHERN SECTION PLAYOFF/CHAMPIONSHIP PLAYOFF REQUIREMENTS - ALL TEAMS AND HOST SITES 2015-16



ALL TEAMS - During season/Prior to playoffs:

Rosters & Scores:

- Complete schedules are to be submitted to CIFSSHOME prior to each season.
 - Update scores following every contest via MaxPreps>CIFSSHOME or direct to CIFSSHOME
- Additional directions on accessing CIFSSHOME are included in this document.

TV/Web/Radio Rights:

Any video broadcast on TV or webcast of a CIF-SS event (hosted by CIF-SS or involving two CIF-SS schools outside the section) require a contract and rights fee through the CIF-SS office prior to the contest. The only 'exceptions' are: A) A school self-produces a regular season webcast that is exclusively shown on either the school's official web site or on the NFHS Network. B) During the regular season, a school or district produces a delayed until 11pm TV broadcast exclusively airing on the school or school district owned cable TV channel. Third party web sites, such as iHigh, cube.com and others, require contracts and rights fees. Violation of this policy will result in the loss of one or more playoff host rights. This Blue Book rule has been in effect since 2007. All regular season rights fees collected are given to the 'host' schools in June.

During the regular season, schools may individually contract their own audio only broadcasts on web or radio. During playoffs, all audio only broadcasts require a rights fee and contract through the CIF-SS office.

'Official' Championship Souvenirs:

The exclusive vendor for CIF Southern Section Championships souvenirs (t-shirts, scarfs, pins, beanies, hats, etc...) is our long-time partner *CIF Tshirts*. These are the official items sold each year per sport. You are likely familiar with their annual shirts at the finals and in your playoff bulletins. You can order team and individual items through them at www.ciftshirts.com.

ALL TEAMS - Playoff requirements of all teams:

Official Ball Required:

Only the approved official ball in each ball sport may be played by either school during CIF-SS playoff contests. Violation of this rule will result in loss of your next home playoff game. The current Official Ball list for each sport is included and available at www.cifss.org in the 'Officials' drop down. This policy has been in effect since 2002.

Gatorade Only:

Only Gatorade jugs, cups, bottles, ice chests may be used or visible during any CIF-SS playoff contest. (No Powerade, Body Armor, etc). The only acceptable alternative is a plain-wrap or Igloo labeled products. This rule does not apply to the actual liquid distributed to athletes. This policy has been in effect since 1995.

TV/Web/Radio Rights:

For all playoff rounds in all sports, a contract and rights fee is required for any TV, webcast or radio broadcast. No exceptions.

CIF-SS on Souvenirs:

The 'CIF Southern Section', 'CIF-SS', 'Southern Section' and 'CIF' marks and logos are registered trademarks with the State of California. Schools may only use the CIF Southern Section marks on rings, patches, banners, apparel and other souvenirs by doing business with a CIF-SS licensed vendor. Schools creating items with CIF-SS registered marks from a non-licensed vendor will face sanction and/or will be required to purchase any unsold shirts/items at the Championship Final if similar non-licensed items appear at the contest. A list of the currently licensed vendors for these products is included and regularly updated on www.cifss.org.

Please note: The use of only "CIF" is strictly prohibited per the State CIF registered trademark. We are the "CIF Southern Section", not just the CIF. Only those teams in State regionals, bowl games and individual sport finals actually qualify to use CIF without Southern Section attached. Any such use must be approved in advance by the CIF State office.

Host Site Requirements:

Playoff Tickets:

(This pertains to revenue sports of basketball, football and volleyball): It is mandatory to sell tickets for admission to all CIF-SS playoffs and championship contests. Use of the CIF-SS provided tickets is desired, if possible logistically, for audit, cost and sponsorship reasons. A Ticket Board(s) is included. Refer to the Ticket Handlers and Financial Clerks memo included with your tickets for additional information.

CIF-SS/FORD Banner:

It is a requirement of each host school (including off-site) that the CIF-SS/Ford Championships banner be displayed at every playoff home game in football and the gymnasium sports post football season (or on the electronic signage where schools/venues do not display banners).

PA Announcements:

As host of a CIF-SS playoff contest, the CIF-SS announcements take precedence over the host school's messaging and must be read in entirety at each playoff contest. Home schools are the host of a CIF-SS event in the playoffs. For contractual requirements, please read all the provided PA's each contest.

Media Credential Access:

Accredited working media should be given admission to all playoff games by showing their CIF-SS Press or Photo credential.



CIF SOUTHERN SECTION PLAYOFF/CHAMPIONSHIP ADDITIONAL/CUSTOM POST SEASON AWARDS 2015-16



PARTICIPATION CERTIFICATES: Each member of a team participating in the CIF-SS playoffs can receive a Participation Certificate. These certificates will be downloaded and printed solely by your school. The certificate is in a 'Type-In' format and may be downloaded from the CIFSSHOME website under FORMS.

NEED ADDITIONAL AWARDS: Feel free to order additional directly.

Medals and Plaques: If your team won or was a runner-up in a CIF-SS championship and you need to purchase any additional champion/runner-up plaques and runner-up medals contact **All American Trophy by contacting Paul Purdum at (323) 725-1962.**

Team "Champions" Patches: Schools may order additional CIF-SS Champion patches (Octagon Red or Football shaped) may be 'exclusively' ordered through **JL Custom Jackets and Patches at www.jlcustomjackets.com, (951) 867-3200, or email lindseyjlcustomjackets.com.**

"CIF-SS Champions" shirts: Additional Champions shirts, those given during the post-game ceremony to athletes after winning team championships, may be exclusively ordered through our vendor. Contact **Kristy Moore @ Kustom Imprints – (714) 771-5768 ext. 103 or email kristy@kustomimprints.com.**

CUSTOM AWARDS/ RINGS/BANNERS/APPAREL SOUVENIRS USING CIF-SS:

Schools often seek to create custom shirts, patches, gym banners and championship rings that include both the school and CIF-SS marks/logos/names. Example: 'ACME BOYS BASKETBALL 2015 CIF-SS CHAMPIONS'. Schools may create these items using CIF-SS marks only through a CIF-SS licensed vendor.

CIF-SS 'registered' trademark: The "CIF Southern Section", "CIF-SS", "Southern Section" and "CIF" marks and logos are registered trademarks with the State of California. Schools may only use the CIF Southern Section marks on rings, patches, banners, apparel and other souvenirs by doing business with a CIF-SS licensed vendor. Schools creating items with CIF-SS registered marks from a non-licensed vendor will face sanction and/or will be required to purchase any unsold shirts/items at the Championship final if similar non-licensed items appear at the contest. A list of the currently licensed vendors for these products is included and regularly updated on www.cifss.org.

Please note: The use of only "CIF" is strictly prohibited per the State CIF registered trademarks. Only those teams in State regionals, bowl games and individual sport finals actually qualify to use CIF without Southern Section attached. Any such use must be approved in advance by the CIF State office.

CIF-SS vendors who are licensed to create custom items for schools that include CIF-SS:

•Chenille Patches	JL Custom Jackets & Patches	www.jlcustomjackets.com	(951) 867-3200
	CIF Tshirts	www.ciftshirts.com	(951) 789-5858
	C&L Varsity Jackets	www.cjackets.com	(714) 828-6900
	Embroidery & More	www.embroideryandmoredesign.com	(951) 471-5200
	Fancy Stitchin'	www.fancystitchin.com	(951) 656-6505
	NEFF	www.neffco.com/School-Patches	(800) 232-6333 x 3417

Championship Patches (circle shape) Playoffs or Prelims, Finals Patches (shape of a shield) for participation in Cross Country, Track & Field or Swimming Finals, Masters Patches (oval shaped) for participation in a Masters Track & Field or Wrestling event and Wrestling Dual Meet (rectangle shaped) are sold "ON-SITE" by the CIF-SS vendor. Additional patches post event can be ordered through any of the licensed CIF-SS patch vendors:

• **Custom Banners/Shirts/Souvenirs** New for 2015-16, your school may now create custom items that include the CIF-SS mark or logo (championship banner, champions t-shirts, banners for your gym, etc...) through a licensed CIF-SS vendor (and their specialty).

C&L Varsity Jackets	(Souvenirs)	www.cjackets.com	Larry Westbrook	(714) 828-6900
Integrity Design	(Banners)	www.IntegrityDesignUSA.com	Lary Shoppa	shoppa@mac.com (855) 341-8817
Kustom Imprints	(Apparel & more)	www.kustomimprints.com	Kristy Moore	kristy@kustomimprints.com (714) 771-5768 x 103
NEFF	(Banners)	www.neffco.com		(800) 232-6333

• Rings	Herff Jones	www.herffjones.com
	J. Lewis Small	www.jlewissmall.com
	Jostens	www.jostens.com
	National Recognition Products	www.nrprints.com/championship-rings
	Signature Style Jewelry	www.signaturestylejewelry.com

PROTECT YOUR SCHOOL TRADEMARKS: The CIF Southern Section strongly suggests you double-check the status of **your school** licensed/registered marks and logos now. Some schools have permanently lost control of others selling their merchandise with no royalty or approvals because the proper State of California licensing/registering process had not previously occurred or been enforced.

For additional vendors licensing information, please contact CIF Southern Section Marketing Director John Costello at johnc@cifss.org or 562-493-9500.



Updated 6/18/15

THIS LIST IS EFFECTIVE FOR 2015-16

RE: OFFICIAL BALL PROGRAM – MANDATORY USE IN PLAYOFFS

Official Ball per sport:

- Baseball: **Rawlings CIF-SS** Must be CIFSS stamped ball; not an alternative Rawlings ball
Rawlings RCIF-SS
- Boys Basketball: **Spalding TF1000 NFHS Classic NFHS**
Spalding TF1000 Legacy NFHS
- Girls Basketball: **Spalding TF1000 NFHS Classic 28.5 NFHS**
Spalding TF1000 Legacy 28.5 NFHS
- Football: **Spalding ball with NFHS** any Spalding model with NFHS stamp
- Soccer: **Spalding TF-SC5 NFHS** for both boys and girls use.
Spalding TF-SC3 NFHS for both boys and girls use.
Spalding TF5000 NFHS for both boys and girls use.
- Softball: **Dudley CFP12Y NFHS**
- Tennis: **Wilson Tennis Ball** NFHS stamp not required
- Volleyball: **Spalding with NFHS stamp: TF-VB5, TF-VB3**
Spalding with NFHS stamp: TF5000, TF3000, TF1500
- Boys Water Polo: **KAP7 model 105 with NFHS stamp**
- Girls Water Polo: **KAP7 model 104 with NFHS stamp**

All playoff ball adoptions agreements with the CIF Southern Section now run through June 30, 2021 except for tennis (2017).

Mandatory Playoff Use Requirement:

The mandatory “official” ball rule for all playoff rounds, excluding golf. The rule applies throughout the conduct of **all** CIF-SS **playoff** contests.

Playoff Ball Use Rule Enforcement:

Should a school fail to provide the correct game ball, the game will always be played. Teams/schools failing to utilize the correct official ball in CIF-SS playoffs will be reported by officials to CIF-SS and will not be allowed to host their next available home playoff game. Penalty does carry over to the next season if not enforceable this season due to elimination.

Note: NFHS stamp is required in all sports *except in golf and tennis.*



CIF SOUTHERN SECTION PARTNERS

Proudly Supporting Southern California's Student-Athletes



SOUTHERN CALIFORNIA FORD DEALERS

Title Sponsor & Official Automobile of the CIF Southern Section - FORD Championships



Official Partner
of the CIF-SS



Official Partner
of the CIF-SS



Official Partner
of the CIF-SS



Official Partner
of the CIF



Official Source for
CIF-SS Scores & Stats



Official Sporting Goods
of the CIF



Official Ball
of the CIF-SS



Official Apparel
of the CIF-SS



Official Home of the
CIF-SS Championships



Official Sports Fuel Provider
of the CIF-SS



Official Partner
of the CIF



Official Baseball Supplier
of the CIF-SS



Official Patch Provider
of the CIF-SS



Supporting Partner
of the CIF-SS



Official
Water Polo Ball
of the CIF-SS



Supporting Partner
of the CIF



Supporter of
CIF-SS Tennis



Supporting Partner
of CIF-SS Golf



Official Tennis Partner
of the CIF-SS



Supporter of
CIF-SS Girl's Golf



Official Badminton
Supplier of the CIF-SS